

## Combined Higher Secondary Level Examination 2021 Tier I

Roll Number	
Candidate Name	
Venue Name	Sunny Digital
Exam Date	24/05/2022
Exam Time	4:00 PM - 5:00 PM
Subject	CHSL 2021 Tier I

Section : English Language

**Q.1** The following sentence has been split into four segments. Identify the segment that contains a grammatical error.

Rahul sings / very sweet / when he is / in a good mood.

- Ans ☒ 1. very sweet
- ☒ 2. when he is
- ☒ 3. in a good mood
- ☒ 4. Rahul sings

Question ID : 26433039683

Status : Answered

Chosen Option : 1

**Q.2** Select the most appropriate option to fill in the blank.

My grandfather was a farmer and he \_\_\_\_\_ three acres of land.

- Ans ☒ 1. cultivated
- ☒ 2. advanced
- ☒ 3. grown
- ☒ 4. cultured

Question ID : 26433045417

Status : Answered

Chosen Option : 1

**Q.3** Select the most appropriate meaning of the given idiom.

Lose your touch

- Ans ☒ 1. Doing someone a favour in hopes that the favour will be returned
- ☒ 2. To be passed from one person to another
- ☒ 3. Not being as successful as previously
- ☒ 4. Something being very difficult to find

Question ID : 26433043138

Status : Answered

Chosen Option : 3

**Q.4** The following sentence has been split into four segments. Identify the segment that contains a grammatical error.

She had resign / from the / post before / he apologised.

- Ans ☒ 1. She had resign
- ☒ 2. he apologised
- ☒ 3. post before
- ☒ 4. from the

Question ID : 26433039734

Status : Answered

Chosen Option : 1

**Q.5** Select the most appropriate synonym of the given word.  
**Bafflement**

- Ans ☒ 1. Confusion  
☐ 2. Pleasure  
☐ 3. Clarity  
☐ 4. Cleanliness

Question ID : 26433039777  
Status : Answered  
Chosen Option : 1

**Q.6** Select the most appropriate ANTONYM of the given word.  
**Praise**

- Ans ☐ 1. celebrate  
☒ 2. Condemn  
☐ 3. hail  
☐ 4. Secure

Question ID : 26433042922  
Status : Answered  
Chosen Option : 2

**Q.7** Select the most appropriate option that can substitute the underlined segment in the given sentence.  
We want to divide the expenses between the three of us.

- Ans ☐ 1. at  
☒ 2. among  
☐ 3. from  
☐ 4. for

Question ID : 26433039696  
Status : Answered  
Chosen Option : 2

**Q.8** Select the most appropriate meaning of the given idiom.  
**At one's elbow**

- Ans ☒ 1. Next to someone  
☐ 2. Far away  
☐ 3. Strong grip  
☐ 4. Strong bond

Question ID : 26433043123  
Status : Answered  
Chosen Option : 3

**Q.9** Select the most appropriate synonym of the given word.  
**Confront**

- Ans ☐ 1. Mingle  
☐ 2. Conceal  
☒ 3. Challenge  
☐ 4. Scheme

Question ID : 26433039836  
Status : Answered  
Chosen Option : 3

Q.10 The following sentence has been split into four segments. Identify the segment that contains a grammatical error.

After / a long and fun-filled day, / the children / slept themselves peacefully.

- Ans ☒ 1. a long and fun-filled day  
☒ 2. slept themselves peacefully  
☒ 3. the children  
☒ 4. After

Question ID : 26433040041  
Status : Answered  
Chosen Option : 2

Q.11 Select the INCORRECTLY spelt word.

- Ans ☒ 1. Laxurious  
☒ 2. Innocent  
☒ 3. Zealous  
☒ 4. Judicial

Question ID : 26433039796  
Status : Answered  
Chosen Option : 1

Q.12 Select the option that can be used as a one-word substitute for the underlined group of words

Geeta is doubtful about getting hired as she is inexperienced at this job.

- Ans ☒ 1. Professional  
☒ 2. Expert  
☒ 3. Ace  
☒ 4. Novice

Question ID : 26433045577  
Status : Answered  
Chosen Option : 4

Q.13 Parts of a sentence are given below in jumbled order. Arrange the parts in the correct order to form a meaningful sentence.

- a) is credited with saying  
b) do not dry your feet  
c) If you want to leave your footprint on the sands of time,  
d) Dr. APJ Abdul Kalam, former President of India

- Ans ☒ 1. d,c,a,b  
☒ 2. d,a,c,b  
☒ 3. c,a,b,d  
☒ 4. a,b,c,d,

Question ID : 26433039889  
Status : Answered  
Chosen Option : 2

Q.14 Select the INCORRECTLY spelt word.

- Ans ☒ 1. Argument  
☒ 2. Performance  
☒ 3. Valuable  
☒ 4. Secretary

Question ID : 26433039860  
Status : Answered  
Chosen Option : 1

Q.15 Select the most appropriate option to fill in the blank.  
The writer declares that \_\_\_\_\_ children of their childhood is a criminal act.

- Ans ☒ 1. robbing  
☒ 2. robbed  
☒ 3. rob  
☒ 4. to rob

Question ID : 26433039928  
Status : Answered  
Chosen Option : 1

Q.16 Select the most appropriate ANTONYM of the given word.  
Detrimental

- Ans ☒ 1. Baseless  
☒ 2. Harmless  
☒ 3. Senseless  
☒ 4. Meaningless

Question ID : 26433043067  
Status : Answered  
Chosen Option : 2

Q.17 Select the most appropriate meaning of the given idiom.  
Blow up

- Ans ☒ 1. To suffice  
☒ 2. To live up greatly  
☒ 3. To destroy by an explosion  
☒ 4. To stand upright

Question ID : 26433042935  
Status : Answered  
Chosen Option : 3

Q.18 Select the most appropriate ANTONYM of the given word.  
Dwarf

- Ans ☒ 1. Measurable  
☒ 2. Medium  
☒ 3. Tiny  
☒ 4. Giant

Question ID : 26433043069  
Status : Answered  
Chosen Option : 4



**Q.19** From among the words given in bold, select the INCORRECTLY spelt word in the following sentence.  
Small drops trickled down the red and yellow tassels of canopies and dampened the heads of little boys.

**Ans** ☒ 1. canopies

☐ 2. tassels

☐ 3. dampened

☐ 4. trickled

Question ID : 26433043167

Status : Answered

Chosen Option : 2

**Q.20** In the following passage, some words have been deleted. Read the passage carefully and select the most appropriate option to fill in each blank.

When we believe that our mind is thinking \_\_\_\_\_ thoughts at the same time, what actually is happening is that \_\_\_\_\_ thoughts are \_\_\_\_\_ in such quick \_\_\_\_\_ so as to seem simultaneous

**Ans** ☐ 1. homogenous, measurable, unchanging, velocity

☐ 2. challenging, limited, fixed, interruption

☒ 3. multiple, myriad, alternating, succession

☐ 4. uniform, countable, altering, ramification

Question ID : 26433045606

Status : Answered

Chosen Option : 4

#### Comprehension:

In the following passage, some words have been deleted. Read the passage carefully and select the most appropriate option to fill in each blank.

Competition is a necessary prospect for (1) \_\_\_\_\_ individuals with particular qualities, but only those who can (2) \_\_\_\_\_ their minds to work, work hard every day, and prove themselves will be able to (3) \_\_\_\_\_ this arduous battle. It's a never-ending race to the finish line, and only those who put in the effort and dedication will make it to the end. The outcome of any exam does not (4) \_\_\_\_\_ on the last day, during your paper — your success is ensured with every morning that you put in work. Students must be aware of the tough environment they are entering and prepare (5) \_\_\_\_\_ in order to improve their chances.

**SubQuestion No : 21**

**Q.21** Select the most appropriate option to fill in blank number 1.

**Ans** ☐ 1. distinguished

☐ 2. distinguishes

☒ 3. distinguishing

☐ 4. distinguish

Question ID : 26433045851

Status : Answered

Chosen Option : 3

**Comprehension:**

In the following passage, some words have been deleted. Read the passage carefully and select the most appropriate option to fill in each blank.  
Competition is a necessary prospect for (1)\_\_\_\_\_ individuals with particular qualities, but only those who can (2)\_\_\_\_\_ their minds to work, work hard every day, and prove themselves will be able to (3)\_\_\_\_\_ this arduous battle. It's a never-ending race to the finish line, and only those who put in the effort and dedication will make it to the end. The outcome of any exam does not (4)\_\_\_\_\_ on the last day, during your paper — your success is ensured with every morning that you put in work. Students must be aware of the tough environment they are entering and prepare (5)\_\_\_\_\_ in order to improve their chances.

**SubQuestion No : 22**

**Q.22** Select the most appropriate option to fill in blank number 2.

- Ans ☒ 1. get  
☒ 2. divert  
☒ 3. made  
☒ 4. put

Question ID : 26433045852  
Status : Answered  
Chosen Option : 1

**Comprehension:**

In the following passage, some words have been deleted. Read the passage carefully and select the most appropriate option to fill in each blank.  
Competition is a necessary prospect for (1)\_\_\_\_\_ individuals with particular qualities, but only those who can (2)\_\_\_\_\_ their minds to work, work hard every day, and prove themselves will be able to (3)\_\_\_\_\_ this arduous battle. It's a never-ending race to the finish line, and only those who put in the effort and dedication will make it to the end. The outcome of any exam does not (4)\_\_\_\_\_ on the last day, during your paper — your success is ensured with every morning that you put in work. Students must be aware of the tough environment they are entering and prepare (5)\_\_\_\_\_ in order to improve their chances.

**SubQuestion No : 23**

**Q.23** Select the most appropriate option to fill in blank number 3.

- Ans ☒ 1. overcome  
☒ 2. overload  
☒ 3. overpaid  
☒ 4. overjoyed

Question ID : 26433045853  
Status : Answered  
Chosen Option : 1

Comprehension:

In the following passage, some words have been deleted. Read the passage carefully and select the most appropriate option to fill in each blank.  
Competition is a necessary prospect for (1)\_\_\_\_\_ individuals with particular qualities, but only those who can (2)\_\_\_\_\_ their minds to work, work hard every day, and prove themselves will be able to (3)\_\_\_\_\_ this arduous battle. It's a never-ending race to the finish line, and only those who put in the effort and dedication will make it to the end. The outcome of any exam does not (4)\_\_\_\_\_ on the last day, during your paper — your success is ensured with every morning that you put in work. Students must be aware of the tough environment they are entering and prepare (5)\_\_\_\_\_ in order to improve their chances.

SubQuestion No : 24

Q.24 Select the most appropriate option to fill in blank number 4.

- Ans ☒ 1. awake  
☒ 2. arise  
☒ 3. arrive  
☒ 4. abase

Question ID : 26433045854  
Status : Answered  
Chosen Option : 3

Comprehension:

In the following passage, some words have been deleted. Read the passage carefully and select the most appropriate option to fill in each blank.  
Competition is a necessary prospect for (1)\_\_\_\_\_ individuals with particular qualities, but only those who can (2)\_\_\_\_\_ their minds to work, work hard every day, and prove themselves will be able to (3)\_\_\_\_\_ this arduous battle. It's a never-ending race to the finish line, and only those who put in the effort and dedication will make it to the end. The outcome of any exam does not (4)\_\_\_\_\_ on the last day, during your paper — your success is ensured with every morning that you put in work. Students must be aware of the tough environment they are entering and prepare (5)\_\_\_\_\_ in order to improve their chances.

SubQuestion No : 25

Q.25 Select the most appropriate option to fill in blank number 5.

- Ans ☒ 1. reluctantly  
☒ 2. consequently  
☒ 3. accordingly  
☒ 4. exponentially

Question ID : 26433045855  
Status : Answered  
Chosen Option : 3

Section : General Intelligence

Q.1 Which of the following numbers will replace the question mark (?) in the given series?  
15, 27, 12, ?, 9, 33

- Ans ☒ 1. 29  
☒ 2. 18  
☒ 3. 26  
☒ 4. 30

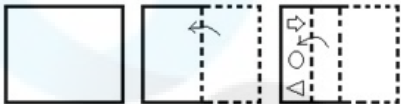
Question ID : 26433040582  
Status : Answered  
Chosen Option : 4

Q.2 Which of the following numbers will replace the question mark (?) in the given series?  
13,14,23,48,97,178,?

- Ans
- ☒ 1. 259
  - ☒ 2. 278
  - ☒ 3. 269
  - ☒ 4. 299

Question ID : 26433043276  
Status : Answered  
Chosen Option : 4

Q.3 A paper is folded and cut as shown below. How will it appear when unfolded?



- Ans
- ☒ 1.
  - ☒ 2.
  - ☒ 3.
  - ☒ 4.

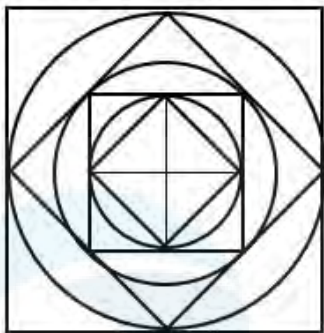
Question ID : 26433044960  
Status : Answered  
Chosen Option : 2

Q.4 Study the given pattern carefully and select the number that can replace the question mark (?) in it.  
First row- 3, 43, 4  
Second row- 6, 241, 5  
Third row- 2, ?, 11  
(NOTE: Operations should be performed on the whole numbers, without breaking down the numbers into its constituent digits. E.g. 13 – Operations on 13 such as adding /deleting /multiplying etc. to 13 can be performed. Breaking down 13 into 1 and 3 and then performing mathematical operations on 1 and 3 is NOT allowed)

- Ans
- ☒ 1. 173
  - ☒ 2. 192
  - ☒ 3. 137
  - ☒ 4. 129

Question ID : 26433045258  
Status : Answered  
Chosen Option : 4

Q.5 How many triangles are there in the given figure?



- Ans
- ☒ 1. 22
  - ☒ 2. 24
  - ☒ 3. 20
  - ☒ 4. 18

Question ID : 26433040533  
Status : Answered  
Chosen Option : 1

Q.6 Select the option that is related to the third term in the same way as the second term is related to the first term and the sixth term is related to the fifth term.  
16 : 69 :: 24 : ? :: 31 : 144

- Ans
- ☒ 1. 109
  - ☒ 2. 121
  - ☒ 3. 116
  - ☒ 4. 105

Question ID : 26433045041  
Status : Answered  
Chosen Option : 1

Q.7 Which letter cluster will replace the question mark (?) to complete the given series?  
WFB I, UCWB, SZRU, ?

- Ans
- ☒ 1. QWMN
  - ☒ 2. QXNN
  - ☒ 3. QWNN
  - ☒ 4. QXMN

Question ID : 26433043515  
Status : Answered  
Chosen Option : 1

Q.8 The second number in the given number pairs is obtained by performing certain mathematical operation(s) on the first number. The same operation(s) are followed in all the number pairs except one. Find that odd number pair.

- Ans
- ☒ 1. 16:1024
  - ☒ 2. 14:784
  - ☒ 3. 18:1620
  - ☒ 4. 12:576

Question ID : 26433043583  
Status : Answered  
Chosen Option : 3

Q.9 If A denotes '+', B denotes 'x', C denotes '-' and D denotes '÷', then what will come in place of '?' in the following equation?  
(13 B 9) D 3 A (14 D 7) B 6 C 21 A (32 B 2) = ?

- Ans ☒ 1. 96  
☒ 2. 100  
☒ 3. 112  
☒ 4. 94

Question ID : 26433043367  
Status : Answered  
Chosen Option : 4

Q.10 Which of the following numbers will replace the question mark (?) in the given series?  
19, 38, 35, ?, 135, 810

- Ans ☒ 1. 146  
☒ 2. 142  
☒ 3. 137  
☒ 4. 140

Question ID : 26433040577  
Status : Answered  
Chosen Option : 4

Q.11 Select the option that is related to the fifth term in the same way as the second term is related to the first term and the fourth term is related to the third term.  
NUMBER : UNNYRE :: MOTHER : OMGSRE :: FINGER : ?

- Ans ☒ 1. IFDHRE  
☒ 2. IFGNRE  
☒ 3. IFMTRE  
☒ 4. IFTMRE

Question ID : 26433043249  
Status : Answered  
Chosen Option : 3

Q.12 In a certain code language, 'ADVISORY' is written as 'BFYMRMOU', and 'CHAMPION' is written as 'DJDQOGLJ'. How will 'DESIGNER' be written in that language?

- Ans ☒ 1. EGVNFLCN  
☒ 2. EGUMFCN  
☒ 3. EGVNFLBN  
☒ 4. EGVNFLBN

Question ID : 26433039308  
Status : Answered  
Chosen Option : 3

Q.13 Select the option that is related to the fifth number in the same way as the second number is related to the first number and the fourth number is related to the third number.

24 : -192 :: -31 : 248 :: -18 : ?

- Ans
- ☒ 1. -152
  - ☒ 2. -146
  - ☒ 3. 148
  - ☒ 4. 144

Question ID : 26433043302  
Status : Answered  
Chosen Option : 4

Q.14 Select the correct mirror image of the given combination when the mirror is placed at XY as shown.

9 P 7 N 5 L  
X  
Y

- Ans
- ☒ 1. L 2 N 7 P 9
  - ☒ 2. L 5 N 7 P 9
  - ☒ 3. L 2 N 7 P 9
  - ☒ 4. 9 P 7 N 5 L

Question ID : 26433040499  
Status : Answered  
Chosen Option : 1

Q.15 Which of the following letter-clusters will replace the question mark (?) in the given series to make it logically complete?  
WVE, UTG, SRI, QPK, ?

- Ans
- ☒ 1. MON
  - ☒ 2. MNO
  - ☒ 3. NMO
  - ☒ 4. ONM

Question ID : 26433045156  
Status : Answered  
Chosen Option : 4

Q.16 Select the correct mirror image of the given combination when the mirror is placed at MN as shown.

t h 8 2 k 3  
M  
N

- Ans
- ☒ 1. 3 k 2 8 h t
  - ☒ 2. 3 k 2 8 h t
  - ☒ 3. 3 k 2 8 h t
  - ☒ 4. 3 k 2 8 h t

Question ID : 26433040558  
Status : Answered  
Chosen Option : 1

Q.17 In a certain code language, 'KITCHEN' is written as 'LHUBIDO', and 'HUSBAND' is written as 'ITTABME'. How will 'ELEMENT' be written in that language?

Ans ☒ 1. FKFLFMU

☐ 2. FKFLFNU

☐ 3. FJFLGNV

☐ 4. FKGLFNU

Question ID : 26433039302

Status : Answered

Chosen Option : 1

Q.18 In a certain code language, "FAMOUS" is written as "AFOMSU", and "FINGER" is written as "IFGNRE". How will "INVEST" be written in that language?

Ans ☐ 1. NIVETS

☐ 2. NEIVTS

☐ 3. NIEVST

☒ 4. NIEVTS

Question ID : 26433043485

Status : Answered

Chosen Option : 4

Q.19 Three statements are given, followed by three conclusions numbered I, II and III. Assuming the statements to be true, even if they seem to be at variance with commonly known facts, decide which of the conclusions logically follow(s) from the statements.

Statements:

Some butters are honeys.

Some honeys are breads.

All breads are jams.

Conclusions:

I. Some jams are honeys.

II. All honeys are butters.

III. Some jams are butters.

Ans ☐ 1. Only conclusions I and II follow

☐ 2. Only conclusion II follows

☐ 3. Only conclusions I and III follow

☒ 4. Only conclusion I follows

Question ID : 26433040741

Status : Answered

Chosen Option : 4

Q.20 If 21<sup>st</sup> June 2007 was a Thursday, then what was the day of the week on 21<sup>st</sup> June 2011?

Ans ☐ 1. Wednesday

☐ 2. Monday

☐ 3. Sunday

☒ 4. Tuesday

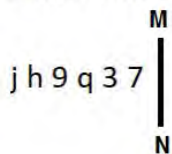
Question ID : 26433040440

Status : Answered

Chosen Option : 4



Q.21 Select the correct mirror image of the given combination when the mirror is placed at MN as shown.



Ans

- ✓ 1. 7 ε p e h j
- ✗ 2. 7 ε b 6 y j
- ✗ 3. 7 ε b e h j
- ✗ 4. 7 ε b e h j

Question ID : 26433040545

Status : Answered

Chosen Option : 1

Q.22 Select the option that represents the correct order of the given words as they would appear in an English dictionary.

1. Adequate
2. Adoption
3. Addiction
4. Abduction
5. Advertisement

Ans

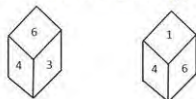
- ✓ 1. 4,3,1,2,5
- ✗ 2. 3,2,4,1,5
- ✗ 3. 3,1,4,2,5
- ✗ 4. 4,2,1,3,5

Question ID : 26433040361

Status : Answered

Chosen Option : 1

Q.23 Two different positions of the same dice are shown, the six faces of which are numbered from 1 to 6. Select the number that will be on the face opposite to the one showing '3'.



Ans

- ✗ 1. 4
- ✓ 2. 1
- ✗ 3. 6
- ✗ 4. 2

Question ID : 26433040402

Status : Answered

Chosen Option : 2

Q.24 Study the given pattern carefully and select the number that can replace the question mark (?) in it.

First row- 9, 21, 124

Second row- 11, 25, 148

Third row- 17, ?, 220

(NOTE: Operations should be performed on the whole numbers, without breaking down the numbers into its constituent digits. E.g. 13 – Operations on 13 such as adding /deleting /multiplying etc. to 13 can be performed. Breaking down 13 into 1 and 3 and then performing mathematical operations on 1 and 3 is NOT allowed)

Ans ☐ 1. 34

☐ 2. 30

☐ 3. 35

☒ 4. 37

Question ID : 26433045250

Status : Answered

Chosen Option : 4

Q.25 The second number in the given number pairs is obtained by performing certain mathematical operation(s) on the first number. The same operation(s) are followed in all the number pairs, EXCEPT one. Find that odd number pair.

Ans ☐ 1. 361 : 332

☐ 2. 533 : 504

☐ 3. 440 : 411

☒ 4. 520 : 481

Question ID : 26433040660

Status : Answered

Chosen Option : 4

Section : Quantitative Aptitude

Q.1 The value of

$(4^3 + 4) \div [5^2 - (7^2 - 41)]$  is:

Ans ☐ 1. 8

☐ 2. 17

☐ 3. 5

☒ 4. 4

Question ID : 26433038609

Status : Answered

Chosen Option : 4

Q.2 The fourth proportional to the numbers 5, 6 and 8 is:

Ans ☐ 1. 9.8

☒ 2. 9.6

☐ 3. 9

☐ 4. 9.5

Question ID : 26433041589

Status : Answered

Chosen Option : 2

Q.3 To pack a set of books, Gautam got cartons of a certain height that were 48 inches long and 27 inches wide. If the volume of such a carton was 22.5 cubic feet, what was the height of each carton? [Use 1 foot = 12 inches.]

- Ans
- ☒ 1. 36 inches
  - ☒ 2. 32.5 inches
  - ☒ 3. 30 inches
  - ☒ 4. 32 inches

Question ID : 26433043972  
Status : Answered  
Chosen Option : 3

Q.4 5 kg of ₹18 per kg wheat is mixed with 2 kg of another type of wheat to get a mixture costing ₹20 per kg. Find the price (per kg) of the costlier wheat.

- Ans
- ☒ 1. ₹27
  - ☒ 2. ₹25
  - ☒ 3. ₹29
  - ☒ 4. ₹30

Question ID : 26433042685  
Status : Answered  
Chosen Option : 2

Q.5 If  $\cot 75^\circ = 2 - \sqrt{3}$ . Find the value of  $\cot 15^\circ$ .

- Ans
- ☒ 1.  $2 - \sqrt{3}$
  - ☒ 2.  $2 + \sqrt{3}$
  - ☒ 3.  $\sqrt{3} + 1$
  - ☒ 4.  $\sqrt{3} - 1$

Question ID : 26433044326  
Status : Answered  
Chosen Option : 2

Q.6 In a government scheme, if an electricity bill is paid before the due date, one gets a reduction of 5% on the amount of the bill. By paying the bill before the due date, a person got a reduction of ₹20. The amount of his electricity bill was:

- Ans
- ☒ 1. ₹440
  - ☒ 2. ₹400
  - ☒ 3. ₹520
  - ☒ 4. ₹420

Question ID : 26433042479  
Status : Answered  
Chosen Option : 2

Q.7 A shopkeeper earns a profit of 12% on selling a book at 10% discount on the printed price. The ratio of the cost price to the printed price is:

- Ans ☒ 1. 38 : 55  
☒ 2. 45 : 56  
☒ 3. 55 : 38  
☒ 4. 56 : 45

Question ID : 26433042384  
Status : Answered  
Chosen Option : 2

Q.8 A thief was spotted by a policeman from a distance of 225 metres. When the policeman started the chase, the thief also started running. If the speed of the thief was 11 km/h and that of the policeman was 13 km/h, how far would the thief have run, before the policeman caught up with him?

- Ans ☒ 1. 1237.5 metres  
☒ 2. 1137.5 metres  
☒ 3. 1357.5 metres  
☒ 4. 1256.5 metres

Question ID : 26433042618  
Status : Answered  
Chosen Option : 1

Q.9 Which of the following is divisible by 3?

- Ans ☒ 1. 7345932  
☒ 2. 5439763  
☒ 3. 3642589  
☒ 4. 3262735

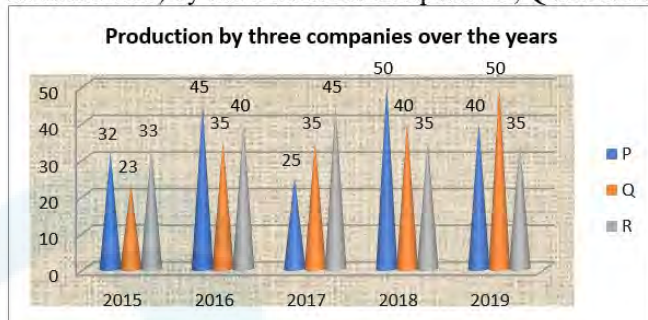
Question ID : 26433042679  
Status : Answered  
Chosen Option : 1

Q.10 At a certain rate of interest compounded annually, a sum amounts to ₹10,890 in 2 years and to ₹11,979 in 3 years. The sum is:

- Ans ☒ 1. ₹9,000  
☒ 2. ₹8,000  
☒ 3. ₹8,500  
☒ 4. ₹9,500

Question ID : 26433041429  
Status : Answered  
Chosen Option : 1

- Q.11 The following graph shows the data of the production of electric wire (in thousand tons) by three different companies P, Q and R over the years.



What is the ratio of the average production of Company P in the period 2017-2019 to the average production of Company Q in the same period?

- Ans
- ☒ 1. 4 : 5
  - ☒ 2. 25 : 23
  - ☒ 3. 23 : 25
  - ☒ 4. 5 : 4

Question ID : 26433042402  
Status : Answered  
Chosen Option : 3

- Q.12 The following pie chart shows the different coloured dresses worn by 60 students in a college party. Study the pie chart and answer the question that follows.



The number of students who wore yellow coloured dress (sector which represents 10%) is:

- Ans
- ☒ 1. 20
  - ☒ 2. 10
  - ☒ 3. 6
  - ☒ 4. 12

Question ID : 26433045943  
Status : Answered  
Chosen Option : 3

- Q.13 In a class, there are 39 students and their average weight is 51 kg. If we include the weight of the teacher, then the average weight becomes 51.2 kg. What is the weight of the teacher?

- Ans
- ☒ 1. 53 kg
  - ☒ 2. 59 kg
  - ☒ 3. 57 kg
  - ☒ 4. 51 kg

Question ID : 26433041516  
Status : Answered  
Chosen Option : 2

Q.14 A sum of money becomes ₹ 3,364 at a rate of 16% compounded annually for 2 years.  
The sum of money is:

- Ans ☒ 1. ₹2,500  
☐ 2. ₹1,800  
☐ 3. ₹3,800  
☐ 4. ₹2,200

Question ID : 26433044108  
Status : Answered  
Chosen Option : 1

Q.15 If the surface area of a sphere is  $1386 \text{ cm}^2$ , then find the radius of the sphere.

- Ans ☐ 1. 12.5 cm  
☒ 2. 10.5 cm  
☐ 3. 10 cm  
☐ 4. 12 cm

Question ID : 26433044057  
Status : Answered  
Chosen Option : 2

Q.16 If the numerator of a fraction be increased by 50% and its denominator be diminished by 28%, the value of the fraction is  $\frac{25}{36}$ . Find the original fraction.

- Ans ☐ 1.  $\frac{1}{5}$   
☐ 2.  $\frac{2}{3}$   
☐ 3.  $\frac{2}{5}$   
☒ 4.  $\frac{1}{3}$

Question ID : 26433042690  
Status : Answered  
Chosen Option : 4

Q.17 Simplify  $(957 + 932)^2 - 4 \times 957 \times 932$ .

- Ans ☐ 1. 576  
☐ 2. 676  
☐ 3. 529  
☒ 4. 625

Question ID : 26433039268  
Status : Answered  
Chosen Option : 4

Q.18 If the surface area of a sphere is  $64\pi\text{ cm}^2$ , then the volume of the sphere is:

Ans

- ☐ 1.  $\frac{241}{3}\pi\text{ cm}^3$
- ☐ 2.  $\frac{251}{5}\pi\text{ cm}^3$
- ☐ 3.  $\frac{226}{3}\pi\text{ cm}^3$
- ☒ 4.  $\frac{256}{3}\pi\text{ cm}^3$

Question ID : 26433044126

Status : Answered

Chosen Option : 4

Q.19 On reducing the marked price of his goods by ₹28, a shopkeeper gains 20%. If the cost price of the article be ₹560 and it is sold at the marked price, what will be the gain per cent?

Ans

- ☐ 1. 30%
- ☒ 2. 25%
- ☐ 3. 20%
- ☐ 4. 15%

Question ID : 26433038860

Status : Answered

Chosen Option : 2

Q.20 If  $x + \frac{1}{x} = -2\sqrt{3}$ , what is the value of  $x^5 + \frac{1}{x^5}$ ?

Ans

- ☒ 1.  $-178\sqrt{3}$
- ☐ 2.  $-182\sqrt{3}$
- ☐ 3.  $182\sqrt{3}$
- ☐ 4.  $-180\sqrt{3}$

Question ID : 26433044335

Status : Answered

Chosen Option : 1

Q.21 Avi and Bindu can complete a project in four and twelve hours, respectively. Avi begins project at 5 a.m., and they work alternately for one hour each. When will the project be completed?

Ans

- ☐ 1. 9 a.m.
- ☒ 2. 11 a.m.
- ☐ 3. 1 p.m.
- ☐ 4. 10 a.m.

Question ID : 26433044050

Status : Answered

Chosen Option : 2

Q.22 Two circles having radii 12 cm and 8 cm, respectively, touch each other externally. A common tangent is drawn to these circles which touch the circles at M and N, respectively. What is the length (in cm) of MN?

- Ans
- ☒ 1.  $8\sqrt{8}$
  - ☒ 2.  $8\sqrt{6}$
  - ☒ 3.  $6\sqrt{8}$
  - ☒ 4.  $6\sqrt{6}$

Question ID : 26433038649  
Status : Answered  
Chosen Option : 2

Q.23 If  $a+2b=27$  and  $a^3 + 8b^3 = 5427$ , then find the value of  $2ab$ .

- Ans
- ☒ 1. 176
  - ☒ 2. 156
  - ☒ 3. 172
  - ☒ 4. 149

Question ID : 26433041353  
Status : Answered  
Chosen Option : 1

Q.24 The following table gives the sales of an electronic chip over 5 years. Find the year in which the sales are equal to the average of the sales over the 5 years.

Year	2015	2016	2017	2018	2019
Sales ( in thousands of rupees)	45	54	57	60	69

- Ans
- ☒ 1. 2018
  - ☒ 2. 2015
  - ☒ 3. 2017
  - ☒ 4. 2016

Question ID : 26433044240  
Status : Answered  
Chosen Option : 3

Q.25 In an election between two candidates, 80% of the eligible voters cast their votes, 5% of the votes cast were declared invalid. A candidate got 10545 votes, which were 75% of the total valid votes. Find the total number of eligible voters.

- Ans
- ☒ 1. 17800
  - ☒ 2. 18500
  - ☒ 3. 18250
  - ☒ 4. 18000

Question ID : 26433044276  
Status : Answered  
Chosen Option : 2



**Q.1** In which year was the National Biodiversity Authority, a statutory autonomous body, established under the Ministry of Environment and Forests, Government of India?

- Ans
- ☒ 1. 2006
  - ☒ 2. 2000
  - ☒ 3. 2003
  - ☒ 4. 2010

Question ID : 26433044770  
Status : Not Answered  
Chosen Option : --

**Q.2** Who won the Major Dhyan Chand Khel Ratna Award 2021 in Para Shooting discipline?

- Ans
- ☒ 1. Avani Lekhara
  - ☒ 2. Manu Bhaker
  - ☒ 3. Gagan Narang
  - ☒ 4. Apurvi Chandela

Question ID : 26433041851  
Status : Answered  
Chosen Option : 1

**Q.3** Who among the following won the Tansen Samman 2020?

- Ans
- ☒ 1. Manju Mehta
  - ☒ 2. Dalchan Sharma
  - ☒ 3. Ulhas Kashalkar
  - ☒ 4. Satish Vyas

Question ID : 26433044593  
Status : Answered  
Chosen Option : 4

**Q.4** The term 'checkmate' is used in which of the following sports?

- Ans
- ☒ 1. Hockey
  - ☒ 2. Chess
  - ☒ 3. Cricket
  - ☒ 4. Badminton

Question ID : 26433044519  
Status : Answered  
Chosen Option : 2

**Q.5** Who among the following received the Sahitya Akademi Award (Non-fiction) for his book 'An Era of Darkness' in 2019?

- Ans
- ☒ 1. Shashi Tharoor
  - ☒ 2. Cyrus Mistry
  - ☒ 3. Jerry Pinto
  - ☒ 4. Arun Shourie

Question ID : 26433044669  
Status : Answered  
Chosen Option : 2

Q.6 Shambhu Maharaj was Awarded the Padma Shri for his contribution to which of the following dances in India?

- Ans ☒ 1. Kathak
- ☐ 2. Bharatanatyam
- ☐ 3. Kuchipudi
- ☐ 4. Manipuri

Question ID : 26433041766  
Status : Answered  
Chosen Option : 1

Q.7 निम्नलिखित में से कौन सा रैकेट से खेला जाने वाला खेल है?

- Ans ☐ 1. बेसबॉल
- ☐ 2. वॉलीबॉल
- ☐ 3. क्रिकेट
- ☒ 4. स्कैश

Question ID : 26433042177  
Status : Answered  
Chosen Option : 1

Q.8 On 21<sup>st</sup> January 2022, three states observed their 50th Statehood Day, which of the following is NOT one amongst these three?

- Ans ☐ 1. Meghalaya
- ☒ 2. Nagaland
- ☐ 3. Tripura
- ☐ 4. Manipur

Question ID : 26433041815  
Status : Answered  
Chosen Option : 1

Q.9 In optics, the refractive index of a substance is described by the formula  $n = c/v$ , where  $c$  is:

- Ans ☐ 1. the speed of light in medium
- ☐ 2. the centre of curvature
- ☐ 3. the radius of the sphere
- ☒ 4. the speed of light in vacuum

Question ID : 26433044806  
Status : Answered  
Chosen Option : 4

Q.10 Which of the following fields is not offered by Kalidas Samman?

- Ans ☐ 1. Classical music
- ☐ 2. Classical dance
- ☒ 3. Puppetry
- ☐ 4. Plastic arts

Question ID : 26433044690  
Status : Answered  
Chosen Option : 2

Q.11 Which is the largest continental shelf in the world?

- Ans ☒ 1. The shelf of India  
☒ 2. The Indian Ocean shelf  
☒ 3. The shelf in the Pacific Ocean  
☒ 4. The Siberian shelf in the Arctic Ocean

Question ID : 26433041874

Status : Answered

Chosen Option : 3

Q.12 For a NBFC- MFI, the maximum variance permitted for individual loans between the minimum and maximum interest rate \_\_\_\_\_.

- Ans ☒ 1. cannot exceed 4 per cent  
☒ 2. cannot exceed 2 per cent  
☒ 3. cannot be less than 2 per cent  
☒ 4. cannot be less than 4 per cent

Question ID : 26433044535

Status : Not Answered

Chosen Option : --

Q.13 Who among the following was the first woman classical dancer in independent India to be nominated as a member to the Rajya Sabha?

- Ans ☒ 1. Vidyagauri Adkar  
☒ 2. Niveditha Arjun  
☒ 3. Rukmini Devi Arundale  
☒ 4. Kalamandalam Kalyanikutty Amma

Question ID : 26433038790

Status : Answered

Chosen Option : 4

Q.14 Which French chemist summarised his experiment in 1806, and proved that the mass ratio of elements in a chemical compound is always the same, regardless of the source of the compound?

- Ans ☒ 1. Joseph Proust  
☒ 2. Robert Boyle  
☒ 3. Jacob Berzelius  
☒ 4. John Dalton

Question ID : 26433044715

Status : Answered

Chosen Option : 1

Q.15 Who among the following is credited with single-handedly making the Santoor a popular classical instrument?

- Ans ☒ 1. Shiv Kumar Sharma  
☒ 2. Bhajan Sopori  
☒ 3. Rahul Sharma  
☒ 4. Ulhas Bapat

Question ID : 26433041951

Status : Answered

Chosen Option : 1

Q.16 "The State shall not discriminate against any citizen on grounds only of religion, race, caste, sex, place of birth or any of them". This has been incorporated in:

- Ans ☒ 1. Article 19  
☒ 2. Article 23  
☒ 3. Article 15  
☒ 4. Article 14

Question ID : 26433042098  
Status : Answered  
Chosen Option : 3

Q.17 EM Subramaniam was an exponent of the \_\_\_\_\_, a musical instrument.

- Ans ☒ 1. mandolin  
☒ 2. guitar  
☒ 3. ghatam  
☒ 4. pakhawaj

Question ID : 26433038783  
Status : Not Answered  
Chosen Option : --

Q.18 Pandit Ravi Shankar, a music legend is famous for which of the following styles of music?

- Ans ☒ 1. Hindustani classical instrumental  
☒ 2. Hindustani classical vocal  
☒ 3. Carnatic classical vocal  
☒ 4. Carnatic classical instrumental

Question ID : 26433041745  
Status : Answered  
Chosen Option : 2

Q.19 Which of the following is a limestone cave in India?

- Ans ☒ 1. Undavalli Caves  
☒ 2. Varaha Cave  
☒ 3. Borra Caves  
☒ 4. Bhimbetka Caves

Question ID : 26433042010  
Status : Not Answered  
Chosen Option : --

Q.20 Which of the following dancers of Mohiniyattam form of Indian classical dance was given the Devadasi National Award in 2013?

- Ans ☒ 1. Smitha Rajan  
☒ 2. Jayaprabha Menon  
☒ 3. Sunanda Nair  
☒ 4. Gopika Verma

Question ID : 26433042344  
Status : Not Answered  
Chosen Option : --

Q.21 निम्नलिखित में से कौन सा संस्मरण हिंदी फिल्मों के प्रसिद्ध क्लासिक भारतीय अभिनेता देव आनंद द्वारा लिखा गया था?

- Ans ☒ 1. रोमांसिंग विद लाइफ  
☐ 2. दी सबस्टांस एंड दी शैडो  
☐ 3. ऑटोबायोग्राफी ऑफ़ एन एक्टर  
☐ 4. क्रैकिंग द कोड: माई जर्नी इन बॉलीवुड

Question ID : 26433042293  
Status : Answered  
Chosen Option : 2

Q.22 Find the correct chemical formula of nitromethane.

- Ans ☐ 1.  $\text{CH}_3\text{NO}$   
☒ 2.  $\text{CH}_3\text{NO}_2$   
☐ 3.  $\text{CH}_4\text{NO}_2$   
☐ 4.  $\text{CH}_3\text{NO}_3$

Question ID : 26433039396  
Status : Answered  
Chosen Option : 2

Q.23 Among the following famous personalities, whose autobiography is 'The Road Ahead'?

- Ans ☐ 1. Elon Musk  
☒ 2. Bill Gates  
☐ 3. Jeff Bezos  
☐ 4. Cristiano Ronaldo

Question ID : 26433042216  
Status : Not Answered  
Chosen Option : --

Q.24 Which of the following is a type of bryophyte that lives in many environments and is characterised by its small, flattened leaves, root-like rhizoids, and peristome?

- Ans ☒ 1. Funaria  
☐ 2. Ulothrix  
☐ 3. Cladophora  
☐ 4. Ulva

Question ID : 26433044734  
Status : Not Answered  
Chosen Option : --

Q.25 Which of the following ministries was held by Dharmendra Pradhan before he became Cabinet Minister of Education, Skill Development and Entrepreneurship in July 2021?

- Ans ☐ 1. Ministry of Information and Broadcasting and Sports  
☐ 2. Ministry of Food Processing Industries  
☐ 3. Ministry of Housing and Urban Development  
☒ 4. Ministry of Petroleum and Natural Gas and Steel

Question ID : 26433044392  
Status : Answered  
Chosen Option : 4