

# NABARD Grade A Shift 1 Previous Year Paper for 2022

NABARD Grade A Phase 1 PYQS



## 2022 (Q.1 to Q.20)

### Morning Shift:

#### (Instruction for Q.1 and Q.2)

Read all the conclusions and then decide which of the given conclusions logically follows from the given statements disregarding commonly known facts.

Q.1)

Statements:

Only bucket are mug.

Only a few buckets are caps.

Some caps are not light.

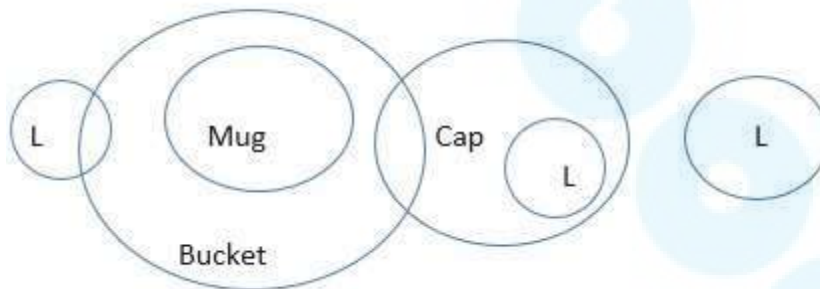
Conclusions:

- I. All Lights are caps is a possibility.
- II. Some lights may be buckets.
- III. Some buckets are not mugs.

- (a) Only III follows
- (b) Only II and III follow
- (c) Only I follows
- (d) All I, II and III follow
- (e) Only I and II follow

Answer – (e)

Explanation -



**Conclusion I and II are possibilities.** A possible conclusion is valid if it can be shown true in at least one possible diagram. In the above diagram, various possible positions of 'Light' have been shown which makes conclusion I and II true.

Conclusion III does not follow because 'mugs' and 'buckets' can be overlapping circles.

Q.2)

Statements:

Only a few formats are switches.

Only a few switches are splits.

Some splits are styles.

**Conclusion:**

**I. Some styles being formats is a possibility.**

**II. Some splits are not switches.**

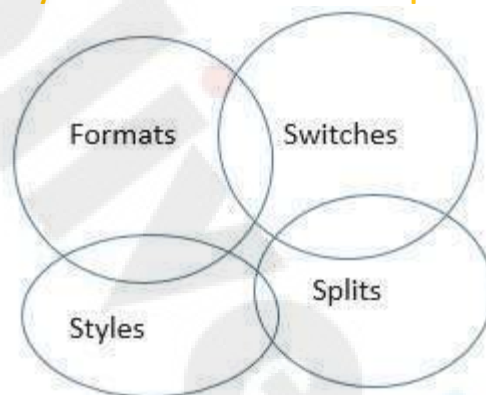
**III. All switches being styles is a possibility.**

- (a) Only III follows
- (b) Only II and III follow
- (c) Only I follows
- (d) Only I and III follow
- (e) None follows
- (f)

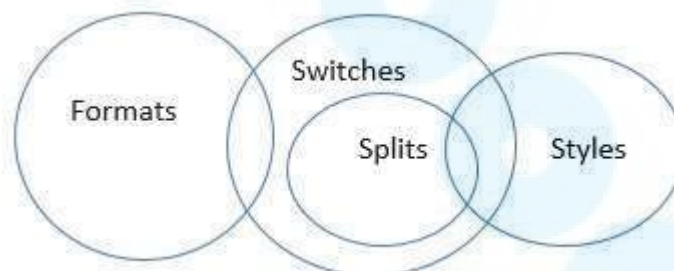
**Answer – (d)**

**Explanation -**

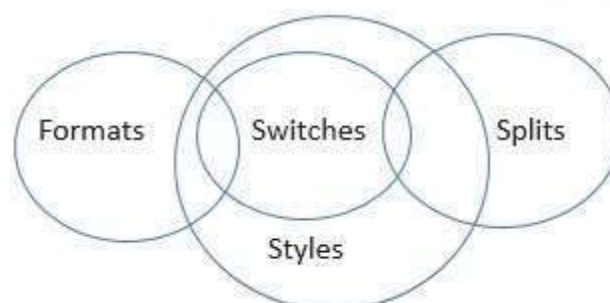
**Conclusion I is a possibility which is true in the below possible diagram.**



**Conclusion II is a definite conclusion and is false from the below diagram.**



**Conclusion III is a possibility and is true from the below possible diagram.**



**Q.3) Which of the following symbols should replace the blanks in the given expression in order to make the expression  $T < I$  and  $J > M$  definitely true?**

**$O = M < T \leq A \leq B \_ C \leq J = I \leq H$**

- (a)  $<$
- (b)  $>$
- (c)  $\leq$
- (d)  $\geq$
- (e) Either (a) or (b)

**Answer – (a)**

**Explanation -**

$T \leq A \leq B \_ C \leq J = I$

The above blank can be filled with only ' $<$ ' to make the expression  $T < I$  definitely true.

$M < T \leq A \leq B \_ C \leq J$

The above blank can be filled with ' $<$ ', ' $\leq$ ' or ' $=$ ' to make the expression  $J > M$  definitely true.

Since it a common blank, we have to fill it with the symbol which makes both the expressions definitely true and hence ' $<$ ' is the answer.

**(Instruction for Q.4)**

**In this question, a relationship between different elements is shown in the statements.**

**The statements are followed by two conclusions. You have to check which conclusion(s) follow(s) from the statement.**

**Q.4) Statements:  $B < W \leq F$ ,  $C \leq W \leq O < U$ ,  $S > O \leq A < I$**

**Conclusions:**

**I.  $B < A$**

**II.  $U > S$**

- (a) If both conclusion I and II are true.
- (b) If only conclusion I is true.
- (c) If neither conclusion I nor II is true.
- (d) If either conclusion I or II is true.
- (e) If only conclusion II is true.

**Answer – (b)**

**Explanation -**

$B < W \leq O \leq A$

So,  $B < A$

Hence, conclusion I is true

$S > O < U$

So, no relation can be established between U and S.



**(Instruction for Q.5)**

Study the following information carefully and answer the questions below:

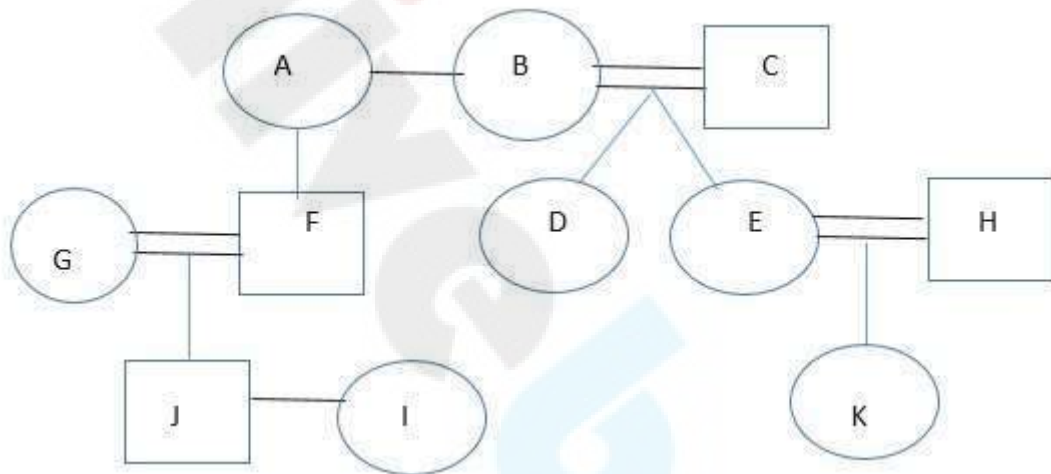
A is sister of B, who is the wife of C. D and E are the daughters of B. F is the son of A and G is the wife of A's only son. H is married to E and K is a daughter of H. I is the sister of J, who is the son of G.

**Q.5) How C is related to F?**

- (a) Uncle
- (b) Aunt
- (c) Maternal Uncle
- (d) Mother
- (e) None of these

**Answer – (c)**

**Explanation -**



**(Instruction for Q.6)**

Study the following information carefully and answer the questions below:

Mr. Wasan goes 17km in east and reached point Y, then he takes a right turn and goes 52km to reach point Z. Then he takes a left turn and goes 7km and reached point R. Again he takes a left turn and goes 24km and reached point S.

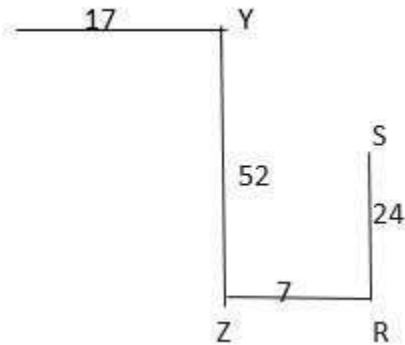
**Q.6) What is the shortest possible distance between the final point and the point Z?**

- (a) 21km
- (b) 25km
- (c) 30km
- (d) 41km
- (e) 18km

**Answer – (b)**

**Explanation -**

We need to find the shortest distance between S and Z.



Distance between S and Z =  $\sqrt{24^2 + 7^2} = \sqrt{625} = 25\text{km}$

**(Instructions for Q.7 to Q.10)**

Read the following information carefully and answer the questions given below it:

There are certain number of persons sitting in a row and all were facing South and all of them scored different runs in a cricket match viz. 20, 27, 33, 38, 40, 43, 45 and 50 but not necessarily in the same order. D scored the lowest runs. A is in the middle of the row. B is fifth to the right of C. Two persons sit between D and E who is five places away from F. G scored 43. The sum of runs of G and E is equal to sum of runs scored by D and H. One among the four scored the highest runs and one among the four scored the lowest runs. G is third from one of the extreme ends but is not sitting between B and C. G scored more runs than A but less than F. C is at one of the extreme end. H sits to the immediate left of G. Three people sit between E and A who is an immediate right of F. Number of persons between E and A are same as number of persons between A and B. The difference between the runs scored by D and B is equal to the difference between the runs scored by E and C.

**Q.7) How many persons are sitting in the row?**

- (a) Fifteen
- (b) Sixteen
- (c) Seventeen
- (d) Eighteen
- (e) Nineteen

**Answer – (e)**

**Explanation -**

		G	H		E			D	A	F			B				C
		43	50		27			20	38	45			33				40

**Oliveboard**



**NABARD Grade A 2026**  
**Complete Course**  
**(Phase I + II)** With Books



**Enroll Now**

**Q.8) What is the sum of runs scored by C and H?**

- (a) 77
- (b) 90
- (c) 72
- (d) 73
- (e) 53

**Answer – (b)**

**Explanation -**

		G	H		E			D	A	F			B				C
		43	50		27			20	38	45			33				40

**Q.9) How many persons sit between E and C?**

- (a) Twelve
- (b) Thirteen
- (c) Fourteen
- (d) Fifteen
- (e) Sixteen

**Answer – (a)**

**Explanation -**

		G	H		E			D	A	F			B				C
		43	50		27			20	38	45			33				40

**Q.10) Who among the following scored the highest runs?**

- (a) G
- (b) H
- (c) F
- (d) C
- (e) D

**Answer – (b)**

**Explanation -**

		G	H		E			D	A	F			B				C
		43	50		27			20	38	45			33				40

**(Instruction for Q.11 to Q.14)**

Read the given information carefully and answer the questions given below:

Eight friends namely G, O, T, L, M, K, A and R were born in different months among January, March, April, July, September and November. Three persons were born in same month. Each of them is from different Cities viz. Kolkata, Patna, Nainital, Agra, Lucknow, Dehradun, Pune and Ranchi. All the above information is not necessarily in the same order.

The one who is from Dehradun was born in the month having less than 31 days. T is from Kolkata. G and M were born in same month. Persons who is from Agra and Patna were born in November. L is from Lucknow and he was born in the month having 31 days but not in March. R is from Ranchi and he was born in April. The one who is from Kolkata was

born in the month having 30 days after July but before November. The one who is from Pune was born in month having 31 days before April. K was born in July and he is from Nainital. A is from Agra and M is not from Patna.

**Q.11) Who among the following was born in the month of November?**

- (a) The one who is from Kolkata
- (b) The one who is from Lucknow
- (c) A
- (d) L
- (e) None of these

**Answer – (c)**

**Explanation -**

G	Patna	Nov
O	Pune	Mar
T	Kolkata	Sep
L	Lucknow	Jan
M	Dehradun	Nov
K	Nainital	Jul
A	Agra	Nov
R	Ranchi	Apr

**Q.12) Who among the following persons was born in the month having 31 days?**

- (a) G
- (b) O
- (c) T
- (d) Both 1 and 2
- (e) Both 2 and 3

**Answer – (b)**

**Explanation -**

G	Patna	Nov
O	Pune	Mar
T	Kolkata	Sep
L	Lucknow	Jan
M	Dehradun	Nov
K	Nainital	Jul
A	Agra	Nov
R	Ranchi	Apr



**Q.13) Who among the following persons is from Pune?**

- (a) G
- (b) M
- (c) O
- (d) Either 1 or 3
- (e) None of these

**Answer – (c)**

**Explanation -**

G	Patna	Nov
O	Pune	Mar
T	Kolkata	Sep
L	Lucknow	Jan
M	Dehradun	Nov
K	Nainital	Jul
A	Agra	Nov
R	Ranchi	Apr

**Q.14) Which among the following statements is definitely true?**

- (a) O and M were born in the month having 30 days.
- (b) There is a gap of six months between the birth months of R and the one who is from Nainital.
- (c) O and M is from Dehradun and Pune respectively.
- (d) One who is from Patna and the one who is from Kolkata were born in same month.
- (e) None of these

**Answer – (e)**

**Explanation -**

G	Patna	Nov
O	Pune	Mar
T	Kolkata	Sep
L	Lucknow	Jan
M	Dehradun	Nov
K	Nainital	Jul
A	Agra	Nov
R	Ranchi	Apr

**(Instructions for Q.15 to Q.17)**

Study the following information and answer the questions.

Seven friends, namely L, M, N, O, P, Q and R, like different animated movies, namely Finding Nemo, Rio, Frozen, Up, Lion King, Shrek and Cars, but not necessarily in the same order. Each friend also has a presentation on topics of different subjects, namely Civics, History, English, Geography, Chemistry, Physics and Biology but not necessarily in the same order.

---

Q has a presentation on Civics and likes neither Frozen nor Up. The one who likes Finding Nemo has a presentation on History. L likes Rio and has a presentation neither on Geography nor on Chemistry. The one who likes Cars has a presentation on Biology. M has a presentation on Physics and does not like Up. The one who likes Up does not have a presentation on Chemistry. O likes Lion King. R does not have a presentation on History and does not like Up. P does not like Up.

**Q.15) On which of the following subjects does P have a presentation?**

- (a) Chemistry
- (b) English
- (c) Biology
- (d) Geography
- (e) Other than those given as options

**Answer – (e)**

**Explanation -**

<b>L</b>	<b>English</b>	<b>Rio</b>
<b>M</b>	<b>Physics</b>	<b>Frozen</b>
<b>N</b>	<b>Geography</b>	<b>Up</b>
<b>O</b>	<b>Chemistry</b>	<b>Lion King</b>
<b>P</b>	<b>History</b>	<b>Finding Nemo</b>
<b>Q</b>	<b>Civics</b>	<b>Shrek</b>
<b>R</b>	<b>Biology</b>	<b>Cars</b>

**Q.16) Four of the following five form a group as per the given arrangement. Which of the following does not belong to that group?**

- (a) R-Cars
- (b) Q-Shrek
- (c) N-Up
- (d) P-Rio
- (e) M-Frozen

**Answer – (d)**

**Explanation -**

<b>L</b>	<b>English</b>	<b>Rio</b>
<b>M</b>	<b>Physics</b>	<b>Frozen</b>
<b>N</b>	<b>Geography</b>	<b>Up</b>
<b>O</b>	<b>Chemistry</b>	<b>Lion King</b>
<b>P</b>	<b>History</b>	<b>Finding Nemo</b>
<b>Q</b>	<b>Civics</b>	<b>Shrek</b>
<b>R</b>	<b>Biology</b>	<b>Cars</b>

**Q.17) Which of the following combinations is definitely correct?**

- (a) N - Chemistry
- (b) R - History
- (c) L - English
- (d) P - Geography
- (e) All the given combinations are definitely correct

**Answer – (c)**

**Explanation -**

L	English	Rio
M	Physics	Frozen
N	Geography	Up
O	Chemistry	Lion King
P	History	Finding Nemo
Q	Civics	Shrek
R	Biology	Cars

**(Instructions for Q.18 to Q.20)**

Study the following information carefully and answer the questions given below:

F, G, H, I, J, K, L, M and N are nine college friends in which K, L, M and N are boys and the remaining five are girls. They are divided into three groups, viz, A, B and C, for three projects. There must be at least three persons with at least one boy in each group. F and L are in the same group. M is in the group which consists of either F or I or both, but M must be in group A. F and G cannot work on the same project. K and J work on the same project. Both G and J are in the same group. I, H and J are members of different groups. J must be in group B. M and L can't be in the same group.

**Q.18) Which of the following groups consists of two male persons?**

- (a) A
- (b) B
- (c) C
- (d) Either A or B
- (e) Either B or C

**Answer – (a)**

**Explanation -**

Person	Gender	Group
F	Female	C
G	Female	B
H	Female	C
I	Female	A
J	Female	B
K	Male	B
L	Male	C
M	Male	A
N	Male	A

**Q.19) Which of the following pairs cannot be the members of the same group?**

- (a) L, H
- (b) G, K
- (c) I, F
- (d) I, N
- (e) K, J

**Answer – (c)**

**Explanation -**

Person	Gender	Group
F	Female	C
G	Female	B
H	Female	C
I	Female	A
J	Female	B
K	Male	B
L	Male	C
M	Male	A
N	Male	A

**Q.20) Which of the following are the members of group C?**

- (a) M, N, J
- (b) H, F, L
- (c) I, N, K
- (d) L, G, H
- (e) F, H, I

**Answer – (b)**

**Explanation -**

Person	Gender	Group
F	Female	C
G	Female	B
H	Female	C
I	Female	A
J	Female	B
K	Male	B
L	Male	C
M	Male	A
N	Male	A



## Free Ebooks

[Download Now](#)

## Current Affairs

[Explore Now](#)

## FREE MOCK TESTS + TOPIC TESTS + SECTIONAL TESTS

For RBI Gr. B, NABARD Gr. A, SEBI Gr. A,  
IFSCA Gr. A & SIDBI Gr. A Exams

[Web](#)

[App](#)

### BLOG

Your one-stop destination for  
all examrelated information &  
preparation resources

[Explore Now](#)

### FORUM

Interact with peers & experts,  
exchange scores & improve  
your preparation

[Explore Now](#)

