

## Combined Higher Secondary Level Examination 2023 Tier I

Roll Number	
Candidate Name	
Venue Name	
Exam Date	04/08/2023
Exam Time	11:45 AM - 12:45 PM
Subject	CHSL Exam 2023 Tier I

Section : English Language

Q.1 Select the most appropriate meaning of the underlined idiom.

Coming from the movie around midnight, the boys hit the sack.

- Ans
- 1. jumped with joy
  - 2. went to sleep
  - 3. hit a wall
  - 4. shouted at parents

Question ID : 264330143188  
Status : Answered  
Chosen Option : 2

Q.2 Select the option that can be used as a one-word substitute for the given group of words.

One who always expects the worst possible outcome

- Ans
- 1. Pessimist
  - 2. Optimist
  - 3. Preacher
  - 4. Serial killer

Question ID : 264330144377  
Status : Answered  
Chosen Option : 1

Q.3 Select the option that can be used as a one-word substitute for the given group of words.

One who is bad in spellings

- Ans
- 1. Cartographer
  - 2. Cacographer
  - 3. Chauffer
  - 4. Calligrapher

Question ID : 264330143205  
Status : Answered  
Chosen Option : 2

**Q.4** Select the most appropriate synonym of the given word.

**Diminutive**

- Ans**  1. Miniature  
 2. Enormous  
 3. Propaganda  
 4. Distinguish

Question ID : 264330144240  
Status : Answered  
Chosen Option : 1

**Q.5** Select the most appropriate synonym of the underlined word.  
The teacher was accused of brazen favouritism in assigning the grades.

- Ans**  1. Modest  
 2. Shy  
 3. Unashamed  
 4. Ashamed

Question ID : 264330149885  
Status : Answered  
Chosen Option : 4

**Q.6** Select the most appropriate option that can substitute the underlined segment in the given sentence.

Lewis can handle many of the European languages with its dialectical varieties fluently.

- Ans**  1. on its dialectical varieties  
 2. with their dialectical varieties  
 3. with a dialectical varieties  
 4. with they dialectical varieties

Question ID : 264330143967  
Status : Not Answered  
Chosen Option : --

**Q.7** Select the most appropriate synonym of the underlined word in the given sentence.

The ruins of this building do tell us the story of a defunct organisation.

- Ans**  1. obsolete  
 2. ancient  
 3. contemporary  
 4. prominent

Question ID : 264330144251  
Status : Answered  
Chosen Option : 1

**Q.8** Select the most appropriate option that can substitute the underlined segment in the given sentence.

Despite having a broken leg, Sarah managed to finish the marathon on record time.

- Ans
- 1. finish the marathon in record time
  - 2. finish a marathon on record time
  - 3. finish the marathon to record time
  - 4. finish the marathon at record time

Question ID : 264330143131  
Status : Answered  
Chosen Option : 1

**Q.9** Select the option that expresses the given sentence in active voice.  
His wife was killed by him.

- Ans
- 1. Him kills his wife.
  - 2. He has killed his wife.
  - 3. He killed his wife.
  - 4. He kills his wife.

Question ID : 264330150106  
Status : Answered  
Chosen Option : 3

**Q.10** Select the option that can be used as a one-word substitute for the given group of words.

One's relatives or family, related

- Ans
- 1. Kilt
  - 2. Kindle
  - 3. Kin
  - 4. Kine

Question ID : 264330143638  
Status : Answered  
Chosen Option : 3

**Q.11** Select the most appropriate option that can substitute the underlined segment in the given sentence.

She is not as cleverest as John.

- Ans
- 1. as clever as
  - 2. clever
  - 3. cleverest
  - 4. cleverer by

Question ID : 264330144816  
Status : Answered  
Chosen Option : 1

**Q.12 Identify the INCORRECTLY spelt word in the following sentence and select its correct spelling from the given options.**

The preview version will give you a glimpse of the entaire book.

- Ans
- 1. glimse
  - 2. preveiw
  - 3. varson
  - 4. entire

Question ID : 264330142641  
Status : Answered  
Chosen Option : 3

**Q.13 Select the most appropriate synonym of the given word.**

Camouflage

- Ans
- 1. Sabotage
  - 2. Execute
  - 3. Gigantic
  - 4. Disguise

Question ID : 264330144239  
Status : Answered  
Chosen Option : 4

**Q.14 Select the most appropriate synonym of the given word.**  
Conspicuous

- Ans
- 1. Opaque
  - 2. Unnoticeable
  - 3. Obvious
  - 4. Effective

Question ID : 264330143145  
Status : Answered  
Chosen Option : 3

**Q.15 Select the option that expresses the following sentence in passive voice.**  
The storm uprooted a large number of trees yesterday.

- Ans
- 1. Large number of trees were uprooted by the storm yesterday.
  - 2. A large number of trees was uprooted by the storm yesterday.
  - 3. Trees was uprooted yesterday in a large number by the storm.
  - 4. A large number of trees were uprooted by the storm yesterday.

Question ID : 264330149519  
Status : Answered  
Chosen Option : 4

**Q.16** Parts of a sentence are given below in jumbled order. Arrange the parts in the correct order to form a meaningful sentence.

P. provided it is technologically accessible, economically feasible

Q. which can be used to satisfy our needs

R. and culturally acceptable can be termed as 'Resource'

S. everything available in our environment

Ans  1. SPRQ

2. SQPR

3. QRSP

4. QSPR

Question ID : 264330149711

Status : Answered

Chosen Option : 2

**Q.17** Select the most appropriate ANTONYM of the given word.

Fierce

Ans  1. Sore

2. Gentle

3. Vast

4. Noisy

Question ID : 264330143246

Status : Answered

Chosen Option : 2

**Q.18** Select the most appropriate idiom to fill in the blank.

Her son came from Europe to meet her \_\_\_\_\_ after 20 years.

Ans  1. blowing off the steam

2. like a cakewalk

3. out of the blue

4. stepping up his game

Question ID : 264330143233

Status : Not Answered

Chosen Option : --

**Q.19** Select the INCORRECTLY spelt word.

Ans  1. Revolutionise

2. Professional

3. Jewellery

4. Conscientiousness

Question ID : 264330147543

Status : Answered

Chosen Option : 3

**Q.20** Select the most appropriate option that can substitute the underlined words in the given sentence.

Himanshu is braver than intelligent.

- Ans**
- 1. more brave than intelligent
  - 2. most brave than intelligent
  - 3. braver than more intelligent
  - 4. most brave than more intelligent

Question ID : 264330142565  
Status : Answered  
Chosen Option : 1

**Comprehension:**

In the following passage, some words have been deleted. Read the passage carefully and select the most appropriate option to fill in each blank.

Indian culture treats guests as God and serves them and takes care of them as if they are a part and (1)\_\_\_\_\_ of the family itself. Even though we don't have anything to eat, the guests are never left hungry and are always (2)\_\_\_\_\_ after by the members of the family. Elders and respect for elders is a major component in Indian culture. Elders are the (3)\_\_\_\_\_ force for any family and hence the love and respect for elders comes from (4)\_\_\_\_\_ and is not artificial. An individual takes blessings from his elders by touching their feet. Elders drill and (5)\_\_\_\_\_ the Indian culture within us as we grow.

**SubQuestion No : 21**

**Q.21** Select the most appropriate option to fill in blank number 1.

- Ans**
- 1. parcel
  - 2. member
  - 3. mate
  - 4. colleague

Question ID : 264330148734  
Status : Answered  
Chosen Option : 2

**Comprehension:**

In the following passage, some words have been deleted. Read the passage carefully and select the most appropriate option to fill in each blank.

Indian culture treats guests as God and serves them and takes care of them as if they are a part and (1)\_\_\_\_\_ of the family itself. Even though we don't have anything to eat, the guests are never left hungry and are always (2)\_\_\_\_\_ after by the members of the family. Elders and respect for elders is a major component in Indian culture. Elders are the (3)\_\_\_\_\_ force for any family and hence the love and respect for elders comes from (4)\_\_\_\_\_ and is not artificial. An individual takes blessings from his elders by touching their feet. Elders drill and (5)\_\_\_\_\_ the Indian culture within us as we grow.

**SubQuestion No : 22**

**Q.22** Select the most appropriate option to fill in blank number 2.

- Ans**
- 1. brought
  - 2. taken
  - 3. looked
  - 4. sought

Question ID : 264330148735  
Status : Answered  
Chosen Option : 3

**Comprehension:**

In the following passage, some words have been deleted. Read the passage carefully and select the most appropriate option to fill in each blank.

Indian culture treats guests as God and serves them and takes care of them as if they are a part and (1)\_\_\_\_\_ of the family itself. Even though we don't have anything to eat, the guests are never left hungry and are always (2)\_\_\_\_\_ after by the members of the family. Elders and respect for elders is a major component in Indian culture. Elders are the (3)\_\_\_\_\_ force for any family and hence the love and respect for elders comes from (4)\_\_\_\_\_ and is not artificial. An individual takes blessings from his elders by touching their feet. Elders drill and (5)\_\_\_\_\_ the Indian culture within us as we grow.

**SubQuestion No : 23**

**Q.23** Select the most appropriate option to fill in blank number 3.

- Ans**  1. deriving  
 2. caring  
 3. driving  
 4. diverting

Question ID : 264330148736  
Status : Answered  
Chosen Option : 3

**Comprehension:**

In the following passage, some words have been deleted. Read the passage carefully and select the most appropriate option to fill in each blank.

Indian culture treats guests as God and serves them and takes care of them as if they are a part and (1)\_\_\_\_\_ of the family itself. Even though we don't have anything to eat, the guests are never left hungry and are always (2)\_\_\_\_\_ after by the members of the family. Elders and respect for elders is a major component in Indian culture. Elders are the (3)\_\_\_\_\_ force for any family and hence the love and respect for elders comes from (4)\_\_\_\_\_ and is not artificial. An individual takes blessings from his elders by touching their feet. Elders drill and (5)\_\_\_\_\_ the Indian culture within us as we grow.

**SubQuestion No : 24**

**Q.24** Select the most appropriate option to fill in blank number 4.

- Ans**  1. outcoming  
 2. within  
 3. surrounding  
 4. without

Question ID : 264330148737  
Status : Answered  
Chosen Option : 2

**Comprehension:**

In the following passage, some words have been deleted. Read the passage carefully and select the most appropriate option to fill in each blank.

Indian culture treats guests as God and serves them and takes care of them as if they are a part and (1)\_\_\_\_\_ of the family itself. Even though we don't have anything to eat, the guests are never left hungry and are always (2)\_\_\_\_\_ after by the members of the family. Elders and respect for elders is a major component in Indian culture. Elders are the (3)\_\_\_\_\_ force for any family and hence the love and respect for elders comes from (4)\_\_\_\_\_ and is not artificial. An individual takes blessings from his elders by touching their feet. Elders drill and (5)\_\_\_\_\_ the Indian culture within us as we grow.

**SubQuestion No : 25**

**Q.25** Select the most appropriate option to fill in blank number 5.

- Ans**  1. pass on  
 2. put on  
 3. hold on  
 4. grow on

Question ID : 264330148738  
Status : Answered  
Chosen Option : 2

**Section : General Intelligence**

**Q.1** Four number-pairs have been given, out of which three are alike in some manner and one is different. Select the one that is different.

(NOTE: Operations should be performed on the whole numbers, without breaking down the numbers into its constituent digits. E.g. 13 – Operations on 13 such as adding / subtracting / multiplying etc. to 13 can be performed. Breaking down 13 into 1 and 3 and then performing mathematical operations on 1 and 3 is not allowed.)

- 7 : 354  
5 : 136  
9 : 742  
8 : 523

- Ans**  1. 7 : 354  
 2. 5 : 136  
 3. 9 : 742  
 4. 8 : 523

Question ID : 264330147021  
Status : Answered  
Chosen Option : 3

**Q.2** In a certain code language, 'can you speak' is written as 'pr lt sq' and 'you work hard' is written as 'sq wp mq'. How is 'you' written in the given language?

- Ans**  1. pr  
 2. wp  
 3. mq  
 4. sq

Question ID : 264330147184  
Status : Answered  
Chosen Option : 4

**Q.3** Read the given statements and conclusions carefully. Assuming that the information given in the statements is true, even if it appears to be at variance with commonly known facts, decide which of the given conclusions logically follow(s) from the statements.

Statements:  
All bags are pots.  
All keys are pots.  
No lamps are pots.

Conclusions:  
(I) Some bags are keys.  
(II) No keys are lamps.

- Ans**
- 1. Only conclusion (II) follows
  - 2. Only conclusion (I) follows
  - 3. Neither conclusion (I) nor (II) follows
  - 4. Both conclusions (I) and (II) follow

Question ID : 264330146600  
Status : Answered  
Chosen Option : 1

**Q.4** Select the combination of letters that when sequentially placed in the blanks of the given series will complete the series.

\_XWV TS\_Q ONM\_ J\_HG ED\_B

- Ans**
- 1. YRLKA
  - 2. YRLIC
  - 3. ZRLKA
  - 4. ZRLIA

Question ID : 264330146874  
Status : Answered  
Chosen Option : 4

**Q.5** In a certain code language,

A + B means 'A is the wife of B'

A - B means 'A is the father of B'

A × B means 'A is the sister of B'

A ÷ B means 'A is the brother of B'

Based on the above, how is V related to Z if 'V ÷ W + X - Y × Z'?

- Ans**
- 1. Brother
  - 2. Father's brother
  - 3. Mother's brother
  - 4. Father's father

Question ID : 264330152008  
Status : Answered  
Chosen Option : 3

**Q.6** 169 is related to 11 following a certain logic. Following the same logic, 625 is related to 23. To which of the following is 961 related to, following the same logic?

**Ans** ✓ 1. 29

✗ 2. 30

✗ 3. 27

✗ 4. 31

Question ID : **264330147352**  
Status : **Answered**  
Chosen Option : **1**

**Q.7** What should come in place of the question mark (?) in the given series?

36, 108, 54, ?, 81, 243

**Ans** ✗ 1. 82

✗ 2. 88

✓ 3. 162

✗ 4. 170

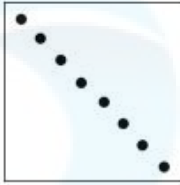
Question ID : **264330147427**  
Status : **Answered**  
Chosen Option : **3**

**Q.8** A square sheet of paper is folded along the dotted line successively along the directions shown and is then punched in the end. How would the paper look when unfolded?

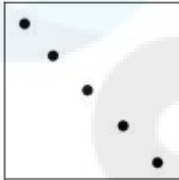


**Ans**

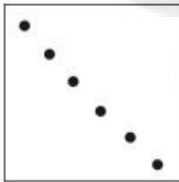
✓ 1.



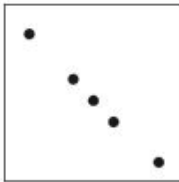
✗ 2.



✗ 3.



✗ 4.



Question ID : 264330147043  
 Status : Answered  
 Chosen Option : 1

**Q.9** Select the combination of letters that when sequentially placed in the blanks of the given series will complete the series.  
 D F \_ \_ L \_ P \_ \_ V \_ \_

**Ans**

✓ 1. HJNRTX

✗ 2. GEMRSY

✗ 3. HIMSTY

✗ 4. GINRSX

Question ID : 264330147485  
 Status : Answered  
 Chosen Option : 1

**Q.10** In a certain code language, 'TARNISH' is coded as '96' and 'CORRECT' is coded as '89'. How is 'GENERAL' coded in the given language?

- Ans**
- 1. 69
  - 2. 96
  - 3. 71
  - 4. 67

Question ID : 264330147321  
Status : Answered  
Chosen Option : 1

**Q.11** Select the number from among the given options that can replace the question mark (?) in the following series.

84, 90, 91, 99, ?, 108, 105

- Ans**
- 1. 99
  - 2. 96
  - 3. 95
  - 4. 98

Question ID : 264330147473  
Status : Answered  
Chosen Option : 4

**Q.12** What should come in place of ? in the given series based on the English alphabetical order?

OCJ UGL AKN GOP ?

- Ans**
- 1. NTS
  - 2. NUR
  - 3. MSR
  - 4. MTS

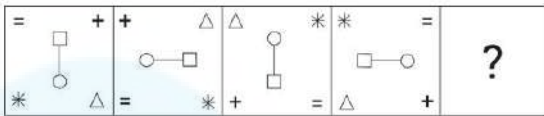
Question ID : 264330146617  
Status : Answered  
Chosen Option : 3

**Q.13** If 14 May 1953 is Thursday, then what will be the day of the week on 27 July 1963?

- Ans**
- 1. Sunday
  - 2. Wednesday
  - 3. Saturday
  - 4. Monday

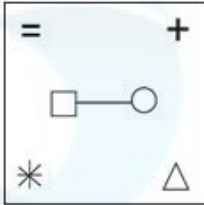
Question ID : 264330146567  
Status : Marked For Review  
Chosen Option : 2

**Q.14** Identify the figure given in the options which when put in place of the question mark (?) will logically complete the series.

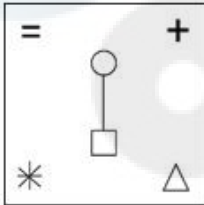


**Ans**

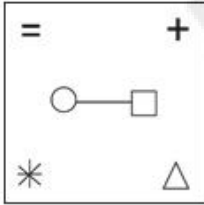
✗ 1.



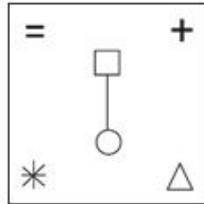
✗ 2.



✗ 3.



✓ 4.



Question ID : 264330147230  
 Status : Answered  
 Chosen Option : 4

**Q.15** Three of the following four are alike in a certain way and thus form a group. Which is the one that does NOT belong to that group?

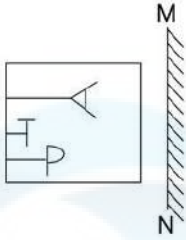
- (1) 39 – 75
- (2) 43 – 82
- (3) 55 – 107
- (4) 64 – 125

**Ans**

- ✗ 1. 3
- ✓ 2. 2
- ✗ 3. 4
- ✗ 4. 1

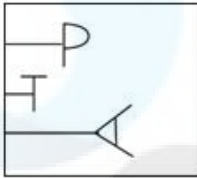
Question ID : 264330152167  
 Status : Answered  
 Chosen Option : 2

**Q.16** Select the correct mirror image of the given figure when the mirror is placed at MN as shown.

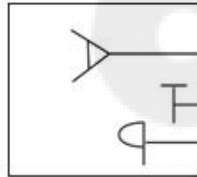


**Ans**

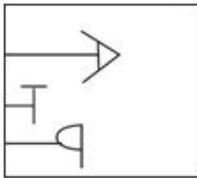
✗ 1.



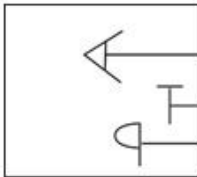
✓ 2.



✗ 3.



✗ 4.



Question ID : 264330146504  
Status : Answered  
Chosen Option : 2

**Q.17** Select the word-pair that best represents a similar relationship to the one expressed in the pair of words given below.

(The words must be considered meaningful English words and must not be related to each other based on the number of letters/consonants/vowels in the word.)

Cancel : Drop

**Ans**

✓ 1. Cackle : Giggle

✗ 2. Dingy : Direct

✗ 3. Jaw : Jazzy

✗ 4. Resin : Resist

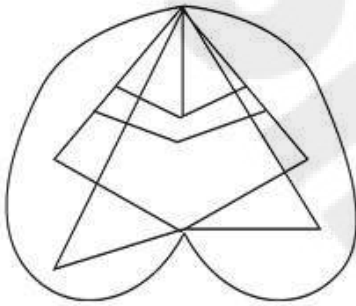
Question ID : 264330146984  
Status : Not Answered  
Chosen Option : --

**Q.18** Each of the letters in the word STRANGE are arranged in alphabetical order. How many letters are there in the English alphabetical series between the letter which is fourth from the left and the one which is second from the right in the new letter-cluster thus formed?

- Ans**
- 1. Five
  - 2. Four
  - 3. Three
  - 4. Two

Question ID : 264330146638  
Status : Answered  
Chosen Option : 2

**Q.19** How many triangles are there in the given figure?



- Ans**
- 1. 12
  - 2. 11
  - 3. 14
  - 4. 10

Question ID : 264330146925  
Status : Answered  
Chosen Option : 1

**Q.20** Based on the alphabetical order, three of the following four letter-clusters are alike in a certain way and thus form a group. Which of the following does NOT belong to that group?

- Ans**
- 1. JLN
  - 2. MOR
  - 3. CEH
  - 4. VXA

Question ID : 264330146963  
Status : Answered  
Chosen Option : 1

**Q.21** If 'A' stands for ':', 'B' stands for '×', 'C' stands for '+' and 'D' stands for '-', what will come in place of the question mark '?' in the following equation?

$$67 C 429 A 11 B 5 D 85 = ?$$

- Ans**
- 1. 126
  - 2. 177
  - 3. 110
  - 4. 262

Question ID : 264330147333  
Status : Answered  
Chosen Option : 2

**Q.22** Which of the following four options will replace the question mark (?) in the following series?

8, 16, ?, 38, 41, 82

- Ans**
- 1. 21
  - 2. 31
  - 3. 28
  - 4. 19

Question ID : 264330147124  
Status : Answered  
Chosen Option : 4

**Q.23** Read the given statements and conclusions carefully. You have to take the given statements to be true even if they seem to be at variance from commonly known facts. You have to decide which conclusion/s logically and definitely follow/s from the given statements.

Statements: All Dances are Art. Some Walls are Art. Some Dances are Groups.

Conclusions: (I) Some Walls are Dances.

(II) Some Groups are Art.

- Ans**
- 1. Both conclusions (I) and (II) do not follow.
  - 2. Only conclusion (I) follows.
  - 3. Both conclusions (I) and (II) follow.
  - 4. Only conclusion (II) follows.

Question ID : 264330151168  
Status : Answered  
Chosen Option : 4

**Q.24** Select the option that is related to the fifth number in the same way as the second number is related to the first number and the fourth number is related to the third number.

352 : 531 :: 271 : 450 :: 725 : ?

- Ans**
- 1. 523
  - 2. 904
  - 3. 791
  - 4. 335

Question ID : 264330147520  
Status : Answered  
Chosen Option : 2

**Q.25** In a certain code language, BFGD is written as IMNK and PTUR is written as WABY. How will GKLI be written in that language?

- Ans**
- 1. NRSO
  - 2. NRSP
  - 3. MRSO
  - 4. MRSP

Question ID : 264330146334  
Status : Answered  
Chosen Option : 2

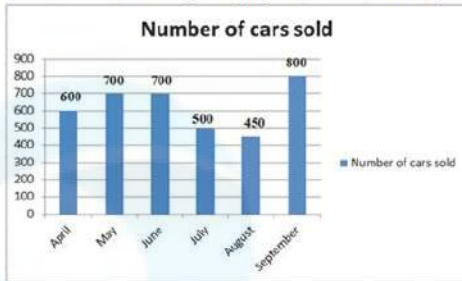
Section : **Quantitative Aptitude**

**Q.1** If  $\tan \theta = \frac{4}{5}$ , then  $\sec \theta$  is:

- Ans**
- 1.  $\frac{\sqrt{41}}{5}$
  - 2.  $\frac{\sqrt{41}}{4}$
  - 3.  $\frac{5}{4}$
  - 4.  $\frac{\sqrt{41}}{20}$

Question ID : 264330150622  
Status : Answered  
Chosen Option : 1

**Q.2** Bar Graph showing number of cars sold by a reputed company during different months of a year. Look at the following bar graph and answer the question that follows:



In which month was the sale highest and was what per cent of the total sale of 6 months?

- Ans**
- 1. September 21.3% nearly
  - 2. September 18.7% nearly
  - 3. July 21.3% nearly
  - 4. May 18.7% nearly

Question ID : 264330150666  
Status : Answered  
Chosen Option : 1

**Q.3** A merchant advertise 10% off on the items bought from his store. Find the discount got by a customer who bought a bag worth ₹560, an exercise book worth ₹90 and a pen worth ₹45.

- Ans**
- 1. ₹59
  - 2. ₹69.50
  - 3. ₹65
  - 4. ₹67.50

Question ID : 264330147855  
Status : Answered  
Chosen Option : 2

**Q.4** If a map of a city was drawn on a scale of 0.2 cm to a km, what area would represent a country if it has an area of 22500 km<sup>2</sup>?

- Ans**
- 1. 2500km<sup>2</sup>
  - 2. 2250 km<sup>2</sup>
  - 3. 5625km<sup>2</sup>
  - 4. 900km<sup>2</sup>

Question ID : 264330148853  
Status : Answered  
Chosen Option : 4

**Q.5** A triangle PQR has three sides equal in measurement and if PM is perpendicular to QR, then which of following equality holds?

- Ans**
- 1.  $3PM^2 = 2PQ^2$
  - 2.  $3PQ^2 = 4PM^2$
  - 3.  $3PM^2 = 4PQ^2$
  - 4.  $3PQ^2 = 2PM^2$

Question ID : 264330148271  
Status : Answered  
Chosen Option : 2

**Q.6** PS and PT are two tangents from a point P outside the circle with centre O. If S and T are points on the circle such that  $\angle SPT = 130^\circ$ , then the degree measure of  $\angle OST$  is equal to:

- Ans**
- 1.  $25^\circ$
  - 2.  $55^\circ$
  - 3.  $65^\circ$
  - 4.  $35^\circ$

Question ID : 264330147798  
Status : Answered  
Chosen Option : 3

**Q.7** A shopkeeper professes to sell sugar costing ₹40/kg at ₹42/kg but gives only 550 grams sugar in place of 600 grams using faulty weighing machine. His profit percentage (correct to 2 decimal places) is:

- Ans**
- 1. 14.54%
  - 2. 15.54%
  - 3. 15.45%
  - 4. 16.45%

Question ID : 264330150594  
Status : Answered  
Chosen Option : 1

**Q.8** A retailer buys 50 pens at the marked price of 44 pens. If he sells these pens at a discount of 1% on the marked price, what is the profit per cent?

- Ans**
- 1. 10%
  - 2. 12.5%
  - 3. 12%
  - 4. 15%

Question ID : 264330146791  
Status : Answered  
Chosen Option : 2

**Q.9** Prakash spends 27% of his salary on children's education and donates 4% to a trust in a particular month. He spends ₹3,038 on these two heads, then his total salary for that month is:

- Ans**
- 1. ₹4,402
  - 2. ₹9,800
  - 3. ₹11,251
  - 4. ₹13,200

Question ID : 264330149269  
Status : Answered  
Chosen Option : 2

**Q.10** Etika purchased a set of wallpapers for ₹700 and the marked price of a set was ₹850. The approximate rate of discount was:

- Ans**
- 1. 25.34%
  - 2. 12.65%
  - 3. 22.5%
  - 4. 17.64%

Question ID : 264330148260  
Status : Answered  
Chosen Option : 4

**Q.11** If  $\sqrt{\frac{a}{b}} = \frac{8}{3} - \sqrt{\frac{b}{a}}$  and  $a - b = 10$ , then the value of  $ab$  is:

- Ans**
- 1.  $32\frac{1}{7}$
  - 2.  $32\frac{3}{7}$
  - 3.  $32\frac{4}{7}$
  - 4.  $32\frac{2}{7}$

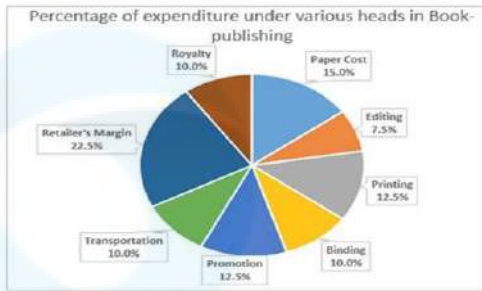
Question ID : 264330148077  
Status : Not Attempted and Marked For Review  
Chosen Option : --

**Q.12** Which of the following is an identity?

- Ans**
- 1.  $(a - b)^2 = a^2 - b^2$
  - 2.  $(a + b)^2 = a^2 + b^2 + 2ab$
  - 3.  $(a + b)^2 = a^2 + b^2$
  - 4.  $(a - b)^2 = a^2 - b^2 - 2ab$

Question ID : 264330147877  
Status : Answered  
Chosen Option : 2

**Q.13** The pie chart below gives the expenses under different heads that a publisher of books has to incur towards the cost of selling a book. All figures are given as percentages of the total expenditure incurred. If the retailer's margin is ₹3,55,500, which of the options given below provides correct information?



**Ans**  1.

The difference between the retailer's margin and the cost of editing is ₹2,33,050.

2.

The sum of the cost incurred towards payment of royalty and the cost of editing is ₹2,76,500.

3.

The difference between the cost of promotion and the cost of editing is ₹80,500.

4.

The sum of the cost of printing and the cost of editing is ₹3,15,000.

Question ID : 264330146807  
 Status : Answered  
 Chosen Option : 2

**Q.14** If  $\tan \theta - \cot \theta = 4$ , then find the value of  $\tan^2 \theta + \cot^2 \theta$ .

**Ans**  1. 16

2. 20

3. 14

4. 18

Question ID : 264330150461  
 Status : Answered  
 Chosen Option : 4

**Q.15** What is the compound interest on ₹25,000 for 3 years at 10% per annum compounded yearly?

**Ans**  1. ₹8,125

2. ₹8,000

3. ₹8,200

4. ₹8,275

Question ID : 264330149442  
 Status : Answered  
 Chosen Option : 4

**Q.16** In a rhombus STUV, S and U are joined  $\angle SUV = 44^\circ$ ,  $\angle STU = 92^\circ$ , what is the degree measure of  $4\angle SVU - 3\angle TSU$ ?

- Ans**
- 1.  $451^\circ$
  - 2.  $360^\circ$
  - 3.  $169^\circ$
  - 4.  $236^\circ$

Question ID : 264330151091  
Status : Answered  
Chosen Option : 4

**Q.17** If  $(2^2 + 4)^2 \times (3 - 5) + 20\%$  of 400 +  $x\%$  of 30 =  $30\%$  of 30, find the value of x.

- Ans**
- 1. 150
  - 2. 120
  - 3. 190
  - 4. 160

Question ID : 264330147739  
Status : Answered  
Chosen Option : 3

**Q.18** Anam and Bikash invest in a business in the ratio 3 : 2. If in a particular month, Anam gets ₹3,840 as profit, the total profit is:

- Ans**
- 1. ₹5,800
  - 2. ₹6,300
  - 3. ₹6,550
  - 4. ₹6,400

Question ID : 264330147862  
Status : Answered  
Chosen Option : 4

**Q.19** If 7 people working 4 hours a day can complete a task in 14 days. The number of days taken by 12 people working 8 hours a day will be:

- Ans**
- 1.  $5\frac{1}{8}$  days
  - 2. 8 days
  - 3.  $4\frac{1}{12}$  days
  - 4.  $7\frac{1}{4}$  days

Question ID : 264330148267  
Status : Answered  
Chosen Option : 3

**Q.20** If a train 130 m long takes  $6\frac{1}{2}$  seconds to cross a man who is walking at 12 km/h in the same direction in which the train going, then the speed of the train (in km/h) is:

- Ans**
- 1. 84
  - 2. 64
  - 3. 48
  - 4. 74

Question ID : 264330148810  
Status : Answered  
Chosen Option : 3

**Q.21** If  $A = 30^\circ$ , then find the value of  $\frac{(2 \tan A)}{(1 - \tan^2 A)}$ .

- Ans**
- 1.  $4\sqrt{3}$
  - 2.  $\frac{3}{\sqrt{3}}$
  - 3. 3
  - 4.  $2\sqrt{3}$

Question ID : 264330149978  
Status : Answered  
Chosen Option : 2

**Q.22** The sides of the three cubes of metal are 15 cm, 18 cm and 25 cm, respectively. Find the side (in cm) of the new cube formed by melting these cubes together.

- Ans**
- 1.  $9\sqrt[3]{388}$
  - 2.  $6\sqrt[3]{388}$
  - 3.  $7\sqrt[3]{388}$
  - 4.  $4\sqrt[3]{388}$

Question ID : 264330148053  
Status : Not Answered  
Chosen Option : --

Q.23 The number of various types of vehicles (in thousands) in three cities are given below.

City → Vehicle ↓	B	C	K
Car	4.5	3.0	3.0
Bus	2.5	3.0	4.5
Truck	3.4	3.5	3.5
Bike	3.2	3.3	3.4

Which type of vehicle is the maximum in number combining the three cities?

- Ans
- 1. Truck
  - 2. Car
  - 3. Bus
  - 4. Bike

Question ID : 264330150604  
Status : Answered  
Chosen Option : 2

Q.24 If  $x + \frac{2}{x} = 1$ , then the value of  $\frac{x^2+7x+2}{x^2+13x+2}$  is:

- Ans
- 1.  $\frac{5}{7}$
  - 2.  $\frac{3}{7}$
  - 3.  $\frac{4}{7}$
  - 4.  $\frac{2}{7}$

Question ID : 264330148034  
Status : Answered  
Chosen Option : 3

Q.25 If the angle between two radii of a circle is  $100^\circ$ , then the angle between the tangents at the ends of the radii will be:

- Ans
- 1.  $90^\circ$
  - 2.  $70^\circ$
  - 3.  $80^\circ$
  - 4.  $50^\circ$

Question ID : 264330146534  
Status : Answered  
Chosen Option : 3

**Q.1** According to Census of India 2011, what is the percentage of India's population that live in urban areas?

- Ans**
- 1. 25.7%
  - 2. 49.71%
  - 3. 41.72%
  - 4. 31.16%

Question ID : **264330150279**  
Status : **Answered**  
Chosen Option : **3**

**Q.2** When was the Smart Cities Mission launched by the Government of India?

- Ans**
- 1. 2015
  - 2. 2017
  - 3. 2016
  - 4. 2014

Question ID : **264330155081**  
Status : **Not Answered**  
Chosen Option : **--**

**Q.3** Which of the following Articles of the Indian Constitution directs the state to provide for a 'Uniform Civil Code'?

- Ans**
- 1. Article 45
  - 2. Article 43
  - 3. Article 44
  - 4. Article 42

Question ID : **264330150362**  
Status : **Answered**  
Chosen Option : **3**

**Q.4** Which of the following is an award presented for classical dance forms?

- Ans**
- 1. Kabir Puraskar
  - 2. Saraswati Samman
  - 3. Kalidas Samman
  - 4. Jnanpith Award

Question ID : **264330151256**  
Status : **Not Answered**  
Chosen Option : **--**

**Q.5** Rahul Srivatshav P became India's 74th Chess Grandmaster with Elo rating of \_\_\_\_\_.

- Ans**
- 1. 2400
  - 2. 2500
  - 3. 2000
  - 4. 2200

Question ID : **264330154819**  
Status : **Not Answered**  
Chosen Option : --

**Q.6** Which experiment was designed to trace the motion of the earth through the 'luminiferous aether', a theoretical substance necessary for the transmission of light?

- Ans**
- 1. Maxwell and Hertz experiment
  - 2. Faraday and Henry experiment
  - 3. Michelson and Morley experiment
  - 4. Marconi and Thomson experiment

Question ID : **264330145571**  
Status : **Not Answered**  
Chosen Option : --

**Q.7** Which of these was NOT one of the reasons for the break in the five year plans after three consequent five year plans were formulated?

- Ans**
- 1. Indo-Pakistan conflict
  - 2. Devaluation of domestic currency
  - 3. Gulf war
  - 4. Two successive years of drought

Question ID : **264330144716**  
Status : **Not Answered**  
Chosen Option : --

**Q.8** Who founded the East India Association in London?

- Ans**
- 1. Justice Ranade
  - 2. Ananda Mohan Bose
  - 3. AO Hume
  - 4. Dadabhai Naoroji

Question ID : **264330150225**  
Status : **Not Answered**  
Chosen Option : --

**Q.9** Which river originates from the southern part of Devarayanadurga hill in Tumkur district, and flows for about 221 km before joining Kaveri?

- Ans**
- 1. Shimsha river
  - 2. Girna river
  - 3. Ghataprabha river
  - 4. Waghur river

Question ID : **264330145646**  
Status : **Not Answered**  
Chosen Option : --

**Q.10** Which of the following is an INCORRECT statement concerning public goods?

- Ans**
- 1. Usually, public goods are provided by the government.
  - 2. Consumption of public goods by people is rivalrous in nature.
  - 3. It is not easy to collect fees for public goods from every individual.
  - 4. Public goods are non-excludable in nature.

Question ID : **264330146100**  
Status : **Not Answered**  
Chosen Option : --

**Q.11** The first World Deaf T20 Cricket Championship will be organised by \_\_\_\_\_.

- Ans**
- 1. West Indies
  - 2. Australia
  - 3. England
  - 4. India

Question ID : **264330145992**  
Status : **Answered**  
Chosen Option : **4**

**Q.12** White light is an example of:

- Ans**
- 1. laser light
  - 2. plane polarised light
  - 3. monochromatic light
  - 4. polychromatic light

Question ID : **264330145814**  
Status : **Not Answered**  
Chosen Option : --

Q.13 Which of the following is NOT a factor impacting India's climate?

- Ans
- 1. Himalayan Mountains
  - 2. Sahara Desert
  - 3. Indian Ocean
  - 4. Western Ghats

Question ID : 264330149397  
Status : Answered  
Chosen Option : 2

Q.14 Indian Council of Historical Research is a captive body of \_\_\_\_\_, Government of India.

- Ans
- 1. Ministry of Science and Technology
  - 2. Ministry of Tribal Affairs
  - 3. Ministry of Education
  - 4. Ministry of Culture

Question ID : 264330150388  
Status : Answered  
Chosen Option : 4

Q.15 Who among the following Indian music composers won the Oscar award in the year 2023?

- Ans
- 1. Mani Sharma
  - 2. AR Rahman
  - 3. Devi Sri Prasad
  - 4. MM Keeravani

Question ID : 264330145792  
Status : Answered  
Chosen Option : 4

Q.16 Calculate the NNP (in ₹ crore) at market price from the given data.

Particulars	Value (in ₹ crore)
NDP at factor cost	1,25,250
Net income from aboard	(-) 581
Net indirect taxes	18,120

- Ans
- 1. 1,25,831
  - 2. 1,42,789
  - 3. 1,43,951
  - 4. 1,24,669

Question ID : 264330151345  
Status : Not Answered  
Chosen Option : --

**Q.17** Which of the following is NOT a political philosophy of the Indian Constitution?

- Ans**
- 1. Sensitive for the historically disadvantaged groups
  - 2. Open to community values
  - 3. Sensitive to the needs of religious and linguistic minorities
  - 4. Non-committal to building a common national identity

Question ID : 264330145924  
Status : Not Answered  
Chosen Option : --

**Q.18** The Constitution (Scheduled Castes and Scheduled Tribes) Orders (Second Amendment) Bill, 2022 is applicable to:

- Ans**
- 1. Uttar Pradesh
  - 2. Madhya Pradesh
  - 3. Rajasthan
  - 4. Bihar

Question ID : 264330145954  
Status : Not Answered  
Chosen Option : --

**Q.19** Which of the following folk dances is primarily associated with Rajasthan?

- Ans**
- 1. Tapu
  - 2. Gair
  - 3. Dhimsa
  - 4. Bihu

Question ID : 264330145766  
Status : Answered  
Chosen Option : 2

**Q.20** What was the theme of the 75th year celebration of the Indian Independence Day?

- Ans**
- 1. Cultural Development of India
  - 2. Nation First, Always First
  - 3. The Happiest Place on Earth
  - 4. Women Empowerment

Question ID : 264330151204  
Status : Answered  
Chosen Option : 2

Q.21 Which of the following is true?

A) Fiscal deficit is financed from borrowings.

B) Recovery of loans is a revenue receipt.

- Ans
- 1. Only B
  - 2. Neither A nor B
  - 3. Both A and B
  - 4. Only A

Question ID : 264330145744  
Status : Not Answered  
Chosen Option : --

Q.22 Which of the following is a correct expression?

- Ans
- 1. Depreciation = Net investment – Gross investment
  - 2. Gross investment = Net investment – Depreciation
  - 3. Net investment = Gross investment – Depreciation
  - 4. Net investment = Gross investment + Depreciation

Question ID : 264330144702  
Status : Answered  
Chosen Option : 3

Q.23 Which Indian Cricketer was the special guest at the Melbourne Indian Film Festival in 2022?

- Ans
- 1. Virat Kohli
  - 2. MS Dhoni
  - 3. Sunil Gavaskar
  - 4. Kapil Dev

Question ID : 264330146293  
Status : Answered  
Chosen Option : 4

Q.24 'Ghiyasuddin Balban introduced the customs of 'Sijda' and 'Paibos' as normal forms of salutations to the king as a part of \_\_\_\_\_ etiquette.

- Ans
- 1. Army
  - 2. Family
  - 3. Religious
  - 4. Court

Question ID : 264330150091  
Status : Answered  
Chosen Option : 4

Q.25 An excessive amount of cadmium in the human body causes:

- Ans
- 1. minamata
  - 2. anaemia
  - 3. alzima
  - 4. itai-itai

Question ID : 264330146385  
Status : Not Answered  
Chosen Option : --