

Combined Higher Secondary Level Examination 2023 Tier I

Roll Number	
Candidate Name	
Venue Name	
Exam Date	14/08/2023
Exam Time	5:15 PM - 6:15 PM
Subject	CHSL Exam 2023 Tier I

Section : English Language

Q.1 Select the most appropriate ANTONYM of the underlined word.

This novelist is known for his verbosity.

- Ans ☒ 1. Vengeance
☒ 2. Succinctness
☒ 3. Humility
☒ 4. Candour

Question ID : 264330143185
Status : Answered
Chosen Option : 2

Q.2 Select the most appropriate homophones to fill in the blanks.
I got _____ while replacing the _____.

- Ans ☒ 1. tyre; tire
☒ 2. tyred; tire
☒ 3. tired; tier
☒ 4. tired; tyre

Question ID : 264330149880
Status : Answered
Chosen Option : 4

Q.3 Select the most appropriate ANTONYM for 'refuse' in the given sentence.

Shama was allowed to visit the accommodation places for the devotees of the shrine.

- Ans ☒ 1. Allowed
☒ 2. Visit
☒ 3. Accommodation
☒ 4. Shrine

Question ID : 264330144113
Status : Answered
Chosen Option : 1

Q.4 Select the most appropriate option to fill in the blank.
The CEO's _____ disregard for his employees' well-being led to high turnover and low morale in the company.

- Ans
- ☒ 1. calous
 - ☒ 2. callus
 - ☒ 3. callous
 - ☒ 4. calus

Question ID : 264330143965
Status : Answered
Chosen Option : 3

Q.5 Select the sentence that has a grammatical error.

- Ans
- ☒ 1. Rama can bowl fastly.
 - ☒ 2. Go back to your room.
 - ☒ 3. Don't talk so loudly.
 - ☒ 4. Run quickly.

Question ID : 264330149684
Status : Answered
Chosen Option : 1

Q.6 Select the most appropriate ANTONYM of the given word.

Raciness

- Ans
- ☒ 1. Filth
 - ☒ 2. Perfection
 - ☒ 3. Lewdness
 - ☒ 4. Obscenity

Question ID : 264330150833
Status : Not Answered
Chosen Option : --

Q.7 Sentences of a paragraph are given below in jumbled order. Select the option that arranges the sentences in the correct logical sequence to form a meaningful and coherent paragraph.

- A. I once met a gentleman who told me about a game he plays with his grandchildren.
- B. He shares a titbit or two and it starts off a conversation.
- C. He then asks his teenage grandchildren if they know who those people are.
- D. He picks some names of politicians, rock stars or even criminals from his generation.

- Ans
- ☒ 1. A, B, C, D
 - ☒ 2. A, C, B, D
 - ☒ 3. B, A, C, D
 - ☒ 4. A, D, C, B

Question ID : 264330144340
Status : Answered
Chosen Option : 1

Q.8 The following sentence has been split into four segments. Identify the segment that contains a spelling error.
You cannot / compensate for the / wrongdoings you have / comitted in the past.

- Ans ☒ 1. You cannot
☒ 2. comitted in the past.
☒ 3. wrongdoings you have
☒ 4. compensate for the

Question ID : 264330144289
Status : Answered
Chosen Option : 3

Q.9 Select the option that expresses the given sentence in active voice.
The snake was killed by Shyam.

- Ans ☒ 1. Shyam killed the snake.
☒ 2. Shyam kills the snake.
☒ 3. Shyam has killed the snake.
☒ 4. Shyam had killed the snake.

Question ID : 264330147560
Status : Answered
Chosen Option : 1

Q.10 The following sentence has been split into four segments. Identify the segment that contains a grammatical error.
I brought / an apple from / a place you recommended / me earlier.

- Ans ☒ 1. I brought
☒ 2. me earlier
☒ 3. a place you recommended
☒ 4. an apple from

Question ID : 264330148950
Status : Answered
Chosen Option : 3

Q.11 Parts of a sentence are given below in jumbled order. Arrange the parts in the correct order to form a meaningful sentence.

- P. and allows them to come out of their imaginary world
Q. which helps in illuminating and enlightening the dark world
R. of two blind or visually impaired persons
S. eye donation is a very generous act towards society

- Ans ☒ 1. SQPR
☒ 2. SRQP
☒ 3. SPQR
☒ 4. SQRP

Question ID : 264330151312
Status : Answered
Chosen Option : 4

Q.12 Select the option that expresses the given sentence in active voice.
Let the door be shut.

- Ans ☒ 1. You are requested to shut the door.
☒ 2. The door should be shut.
☒ 3. Let you shut the door.
☒ 4. Shut the door.

Question ID : 264330143057
Status : Answered
Chosen Option : 4

Q.13 Select the most appropriate ANTONYM of the underlined word in the given sentence.

The loyal nature of the princess was one of the reasons that the king trusted her very much.

- Ans ☒ 1. infamous
☒ 2. treacherous
☒ 3. livid
☒ 4. unyielding

Question ID : 264330144258
Status : Answered
Chosen Option : 2

Q.14 Select the most appropriate option that can substitute the underlined segment in the given sentence.

Amar is very good in mathematics.

- Ans ☒ 1. good at
☒ 2. good about
☒ 3. good on
☒ 4. good with

Question ID : 264330143164
Status : Answered
Chosen Option : 1

Q.15 Select the most appropriate option that can substitute the underlined words in the given sentence.

The company is planning to cut back few employees.

- Ans ☒ 1. reduce some
☒ 2. lay off some
☒ 3. refuse some
☒ 4. lay down some

Question ID : 264330144137
Status : Answered
Chosen Option : 2

Q.16 Select the most appropriate meaning of the given idiom.
Have a narrow escape

- Ans ☒ 1. Only just succeed in doing something
☒ 2. Likely to fall in the near future
☒ 3. Do something very risky
☒ 4. Just manage to avoid danger or trouble

Question ID : 264330143660
Status : Answered
Chosen Option : 4

Q.17 Select the INCORRECTLY spelt word from the given sentence.
The city had a hundred thousand inhabitants—some think double as many.

- Ans ☒ 1. Hundred
☒ 2. Inhabitents
☒ 3. Double
☒ 4. Thousand

Question ID : 264330149873
Status : Answered
Chosen Option : 2

Q.18 Select the most appropriate idiom for the underlined words in the given sentence.

The childhood days are peaceful days of our life.

- Ans ☒ 1. halcyon days
☒ 2. live wire days
☒ 3. all years
☒ 4. hard and fast days

Question ID : 264330144314
Status : Answered
Chosen Option : 1

Q.19 Parts of a sentence are given below in jumbled order. Arrange the parts in the correct order to form a meaningful sentence.

P. the news of her husband's death
Q. to break to her as gently as possible
R. great care was taken
S. knowing that Mrs. Mallard was afflicted with a heart trouble

- Ans ☒ 1. SPRQ
☒ 2. SPQR
☒ 3. SQPR
☒ 4. SRQP

Question ID : 264330149707
Status : Answered
Chosen Option : 4

Q.20 Select the most appropriate option that can substitute the underlined words in the given sentence.

No sooner did we arrived at the airport than we got onto our flight to Atlanta.

- Ans ☒ 1. did we arrive at
☐ 2. can we arrive by
☐ 3. have we arrived at
☐ 4. had we arrive at

Question ID : 264330144269

Status : Answered

Chosen Option : 1

Comprehension:

In the following passage, some words have been deleted. Read the passage carefully and select the most appropriate option to fill in each blank.

Tea prices in the domestic market continue to rule high in the (1)_____ year despite the expectation of a higher production as compared to the previous year. According to a preliminary assessment (2)_____ on the weather (3)_____ in recent months, tea output in the next year may reach to 800 tonnes as (4)_____ 780 tonnes last year. During the past three months, tea prices have shown an (5)_____. Unlike last year, when tea prices were dramatically low, this year, prices seem to have stabilised at rather high levels.

SubQuestion No : 21

Q.21 Select the most appropriate option to fill in blank number 1.

- Ans ☐ 1. first
☒ 2. current
☐ 3. second
☐ 4. last

Question ID : 264330148728

Status : Answered

Chosen Option : 2

Comprehension:

In the following passage, some words have been deleted. Read the passage carefully and select the most appropriate option to fill in each blank.

Tea prices in the domestic market continue to rule high in the (1)_____ year despite the expectation of a higher production as compared to the previous year. According to a preliminary assessment (2)_____ on the weather (3)_____ in recent months, tea output in the next year may reach to 800 tonnes as (4)_____ 780 tonnes last year. During the past three months, tea prices have shown an (5)_____. Unlike last year, when tea prices were dramatically low, this year, prices seem to have stabilised at rather high levels.

SubQuestion No : 22

Q.22 Select the most appropriate option to fill in blank number 2.

- Ans ☐ 1. shared
☒ 2. based
☐ 3. flown
☐ 4. carried

Question ID : 264330148729

Status : Answered

Chosen Option : 2

Comprehension:

In the following passage, some words have been deleted. Read the passage carefully and select the most appropriate option to fill in each blank.

Tea prices in the domestic market continue to rule high in the (1)_____ year despite the expectation of a higher production as compared to the previous year. According to a preliminary assessment (2)_____ on the weather (3)_____ in recent months, tea output in the next year may reach to 800 tonnes as (4)_____ 780 tonnes last year. During the past three months, tea prices have shown an (5)_____. Unlike last year, when tea prices were dramatically low, this year, prices seem to have stabilised at rather high levels.

SubQuestion No : 23

Q.23 Select the most appropriate option to fill in blank number 3.

- Ans ☒ 1. outbreak
☒ 2. forecast
☒ 3. condition
☒ 4. pattern

Question ID : 264330148730

Status : Answered

Chosen Option : 4

Comprehension:

In the following passage, some words have been deleted. Read the passage carefully and select the most appropriate option to fill in each blank.

Tea prices in the domestic market continue to rule high in the (1)_____ year despite the expectation of a higher production as compared to the previous year. According to a preliminary assessment (2)_____ on the weather (3)_____ in recent months, tea output in the next year may reach to 800 tonnes as (4)_____ 780 tonnes last year. During the past three months, tea prices have shown an (5)_____. Unlike last year, when tea prices were dramatically low, this year, prices seem to have stabilised at rather high levels.

SubQuestion No : 24

Q.24 Select the most appropriate option to fill in blank number 4.

- Ans ☒ 1. about
☒ 2. compared
☒ 3. against
☒ 4. above

Question ID : 264330148731

Status : Answered

Chosen Option : 2

Comprehension:

In the following passage, some words have been deleted. Read the passage carefully and select the most appropriate option to fill in each blank.

Tea prices in the domestic market continue to rule high in the (1)_____ year despite the expectation of a higher production as compared to the previous year. According to a preliminary assessment (2)_____ on the weather (3)_____ in recent months, tea output in the next year may reach to 800 tonnes as (4)_____ 780 tonnes last year. During the past three months, tea prices have shown an (5)_____. Unlike last year, when tea prices were dramatically low, this year, prices seem to have stabilised at rather high levels.

SubQuestion No : 25

Q.25 Select the most appropriate option to fill in blank number 5.

- Ans
- ☐ 1. decline
 - ☐ 2. incline
 - ☐ 3. upgrade
 - ☒ 4. uptrend

Question ID : 264330148732

Status : Answered

Chosen Option : 2

Section : General Intelligence

Q.1 If it was Tuesday on 22 July 1969, then what will be the day of the week on 6 August 1985?

- Ans
- ☒ 1. Tuesday
 - ☐ 2. Thursday
 - ☐ 3. Monday
 - ☐ 4. Wednesday

Question ID : 264330147460

Status : Not Answered

Chosen Option : --

Q.2 Each of the letters in the word KINGDOM are arranged in alphabetical order. How many letters are there in the English alphabetical series between the letter which is fourth from the left and the one which is second from the right in the new letter-cluster thus formed?

- Ans
- ☐ 1. Three
 - ☐ 2. One
 - ☒ 3. Two
 - ☐ 4. None

Question ID : 264330146639

Status : Answered

Chosen Option : 3

Q.3 What should come in place of the question mark (?) in the given series?

273, 263, 248, ?, 203

- Ans**
- ☒ 1. 230
 - ☒ 2. 338
 - ☒ 3. 228
 - ☒ 4. 224

Question ID : **264330147431**
Status : **Answered**
Chosen Option : **3**

Q.4 DGJH is related to LORP in a certain way based on the English alphabetical order. In the same way, JPN is related to RUXV. To which of the following is ILOM related to, following the same logic?

- Ans**
- ☒ 1. QTWV
 - ☒ 2. QTWU
 - ☒ 3. PSVT
 - ☒ 4. RUXQ

Question ID : **264330147273**
Status : **Answered**
Chosen Option : **2**

Q.5 SFBV is related to HUYE in a certain way based on a certain relationship between the given letters in the English alphabetical order. In the same way, JQEF is related to QJVU. Which of the given options is CKSW related to following the same logic?

- Ans**
- ☒ 1. BJRV
 - ☒ 2. HDPX
 - ☒ 3. XPHD
 - ☒ 4. DLTX

Question ID : **264330147067**
Status : **Answered**
Chosen Option : **3**

Q.6 Find out the correct alternative that when filled in the blanks in the same sequence will make the series logically complete.

BV_E _YPL D_US _EZZ FHE_

- Ans**
- ☒ 1. KCBEG
 - ☒ 2. WDEFL
 - ☒ 3. WCDFK
 - ☒ 4. UCCDG

Question ID : **264330146624**
Status : **Answered**
Chosen Option : **1**

Q.7 What will come in the place of '?' in the following equation, if '+' and '-' are interchanged and '×' and '÷' are interchanged?

$$63 \div 3 + 14 \times 7 - 16 = ?$$

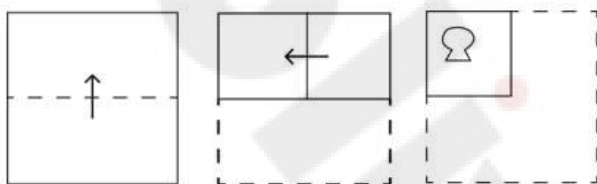
- Ans**
- ☒ 1. 113
 - ☒ 2. 103
 - ☒ 3. 203
 - ☒ 4. 213

Question ID : 264330147383

Status : Answered

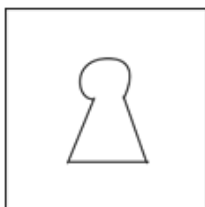
Chosen Option : 3

Q.8 A paper is folded and cut as shown below. How will it appear when unfolded?

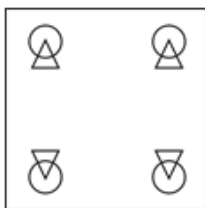


Ans

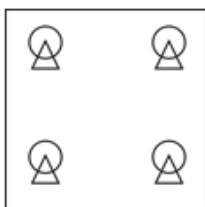
☒ 1.



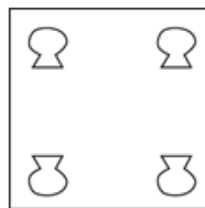
☒ 2.



☒ 3.



☒ 4.

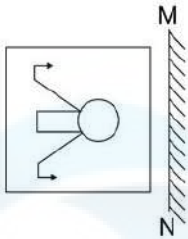


Question ID : 264330146758

Status : Answered

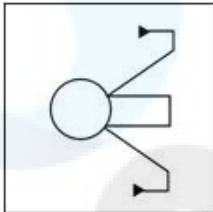
Chosen Option : 4

Q.9 Select the correct mirror image of the given figure when the mirror is placed at MN as shown.

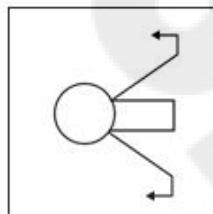


Ans

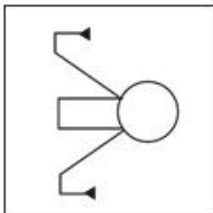
✗ 1.



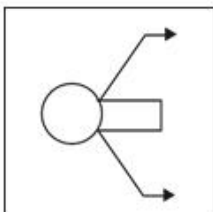
✓ 2.



✗ 3.



✗ 4.



Question ID : 264330146473

Status : Answered

Chosen Option : 2

Q.10 In a certain code language, 'like the way' is written as 'pl zs kq' and 'on my way' is written as 'kq mk ln'. How is 'way' written in the given language?

Ans ✗ 1. zs

✓ 2. kq

✗ 3. pl

✗ 4. ln

Question ID : 264330147189

Status : Answered

Chosen Option : 2

Q.11 What will come in place of the question mark (?) in the following equation if '+' and '-' are interchanged and 'x' and '÷' are interchanged?

$$11 \div 4 + 8 \times 2 - 1 = ?$$

- Ans**
- ✓ 1. 41
 - ✗ 2. 40
 - ✗ 3. 39
 - ✗ 4. 43

Question ID : 264330147036

Status : Answered

Chosen Option : 1

Q.12 In a certain code language, LRUP is written as RXAV and CILG is written as IORM. How will HNQL be written in that language?

- Ans**
- ✗ 1. MSVP
 - ✓ 2. NTWR
 - ✗ 3. NSVR
 - ✗ 4. NTVR

Question ID : 264330146338

Status : Answered

Chosen Option : 2

Q.13 Select the set in which the numbers are related in the same way as are the numbers of the following sets.
(NOTE: Operations should be performed on the whole numbers, without breaking down the numbers into its constituent digits. E.g. 13 - Operations on 13 such as adding/ subtracting /multiplying etc. to 13 can be performed. Breaking down 13 into 1 and 3 and then performing mathematical operations on 1 and 3 is not allowed.)
13 - 15 - 7 and 9 - 11 - 5

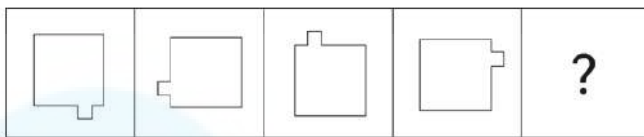
- Ans**
- ✓ 1. 16 - 24 - 10
 - ✗ 2. 15 - 18 - 9
 - ✗ 3. 26 - 37 - 15
 - ✗ 4. 22 - 45 - 21

Question ID : 264330150909

Status : Answered

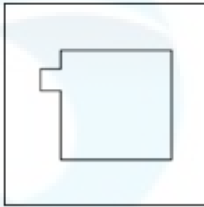
Chosen Option : 1

Q.14 Identify the figure given in the options which when put in place of ? will logically complete the series.

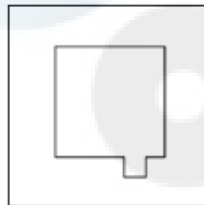


Ans

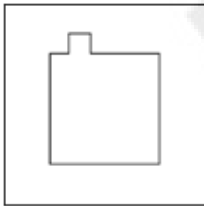
✗ 1.



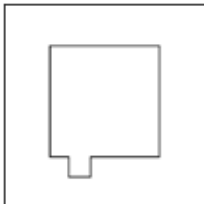
✓ 2.



✗ 3.



✗ 4.



Question ID : 264330146308

Status : Answered

Chosen Option : 2

Q.15 Based on the alphabetical order, three of the following four letter-clusters are alike in a certain way and thus form a group. Which of the following does NOT belong to that group?

- Ans**
- ✗ 1. SUT
 - ✓ 2. DGE
 - ✗ 3. WYX
 - ✗ 4. FHG

Question ID : 264330146960

Status : Answered

Chosen Option : 2

Q.16 Select the option that is related to the fifth term in the same way as the second term is related to the first term and fourth term is related to third term.

20 : 1200 :: 28 : 2352 :: 50 : ?

- Ans**
- ☒ 1. 7250
 - ☒ 2. 7500
 - ☒ 3. 7000
 - ☒ 4. 7550

Question ID : 264330146333
Status : Answered
Chosen Option : 2

Q.17 Which of the following four options will replace the question mark (?) in the following series?

9, 45, ?, 540, 1080

- Ans**
- ☒ 1. 180
 - ☒ 2. 240
 - ☒ 3. 300
 - ☒ 4. 360

Question ID : 264330147127
Status : Answered
Chosen Option : 1

Q.18 In a certain code language,

$A + B$ means 'A is the husband of B'

$A - B$ means 'A is the mother of B'

$A \times B$ means 'A is the sister of B'

$A \div B$ means 'A is the brother of B'

Based on the above, how is S related to W if ' $S \times T + U - V \div W$ '?

- Ans**
- ☒ 1. Father's sister
 - ☒ 2. Mother's sister
 - ☒ 3. Brother's wife
 - ☒ 4. Sister

Question ID : 264330152006
Status : Answered
Chosen Option : 1

Q.19 10 is related to 17 following a certain logic. Following the same logic, 50 is related to 65. To which of the following is 26 related following the same logic?

- Ans**
- ☒ 1. 39
 - ☒ 2. 37
 - ☒ 3. 38
 - ☒ 4. 35

Question ID : **264330152033**
Status : **Answered**
Chosen Option : **2**

Q.20 Read the given statements and conclusions carefully. You have to take the given statements to be true even if they seem to be at variance from commonly known facts. You have to decide which conclusion/s logically and definitely follow/s from the given statements.

Statements: All Eagles are Predators. All Tigers are Predators. Some Tigers are Cats.

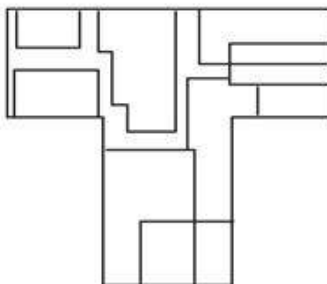
Conclusions: (I) All Cats are Predators.

(II) All Eagles are Tigers.

- Ans**
- ☒ 1. Both conclusions (I) and (II) do not follow.
 - ☒ 2. Only conclusion (I) follows.
 - ☒ 3. Only conclusion (II) follows.
 - ☒ 4. Both conclusions (I) and (II) follow.

Question ID : **264330151160**
Status : **Answered**
Chosen Option : **1**

Q.21 How many rectangles are there in the given figure?



- Ans**
- ☒ 1. 9
 - ☒ 2. 11
 - ☒ 3. 12
 - ☒ 4. 10

Question ID : **264330146914**
Status : **Answered**
Chosen Option : **2**

Q.22 Three of the following four are alike in a certain way and thus form a group. Which is the one that does NOT belong to that group?

- (1) 7 – 19
- (2) 11 – 30
- (3) 14 – 39
- (4) 17 – 48

Ans ☒ 1. 3
☒ 2. 2
☒ 3. 1
☒ 4. 4

Question ID : **264330152168**
Status : **Answered**
Chosen Option : **3**

Q.23 Select the term from among the given options that can replace the question mark (?) in the following series based on the English alphabetical order.

GEF, JHI, MKL, PNO, ?

Ans ☒ 1. TRS
☒ 2. SQR
☒ 3. QRS
☒ 4. QRT

Question ID : **264330146860**
Status : **Answered**
Chosen Option : **2**

Q.24 In a certain code language,

A + B means 'A is the daughter of B',
A – B means 'A is the husband of B',
A × B means 'A is the brother of B' and
A ÷ B means 'A is the father of B'.

Based on the above, how is P related to G if 'V ÷ P – F + G × C'?

Ans ☒ 1. Brother's son
☒ 2. Wife's brother
☒ 3. Daughter's husband
☒ 4. Daughter's brother

Question ID : **264330150995**
Status : **Answered**
Chosen Option : **3**

Q.25 In a certain code language, 'stars moon sun satellite planet' is written as 'pit rit kit sit nit', 'moon mars venus mercury' is written as 'mit cit git sit', 'venus stars mercury' is written as 'cit git rit' and 'mercury satellite planet' is written as 'pit cit nit'. How is 'sun' coded in that language?

- Ans
- ✓ 1. kit
 - ✗ 2. rit
 - ✗ 3. nit
 - ✗ 4. pit

Question ID : 264330146342
Status : Answered
Chosen Option : 1

Section : Quantitative Aptitude

Q.1 A number is first increased by 16% and then increased by 20%. The number so obtained is now decreased by 40%. The net decrease percentage in the original number is:

- Ans
- ✓ 1. $16\frac{12}{25}\%$
 - ✗ 2. $15\frac{9}{25}\%$
 - ✗ 3. $11\frac{13}{25}\%$
 - ✗ 4. $13\frac{7}{25}\%$

Question ID : 264330147821
Status : Answered
Chosen Option : 1

Q.2 In a circle with centre O, arc CD subtends an angle of 60° at the centre of the circle whose radius is 21 cm. Calculate the length of arc CD.

- Ans
- ✗ 1. 20 cm
 - ✗ 2. 18 cm
 - ✗ 3. 24 cm
 - ✓ 4. 22 cm

Question ID : 264330148764
Status : Answered
Chosen Option : 4

Q.3 Study the following table and answer the question:

Height (in cm)	No. of Boys
Less than 150	20
Less than 155	38
Less than 160	52
Less than 165	67
Less than 170	82
Less than 175	98

What is the number of boys whose height is less than 170?

- Ans**
- ☒ 1. 67
 - ☒ 2. 98
 - ☒ 3. 82
 - ☒ 4. 52

Question ID : 264330148796
Status : Answered
Chosen Option : 3

Q.4 If $\triangle PQR \cong \triangle STR$, $\angle Q = 50^\circ$ and $\angle P = 70^\circ$ and PQ is 8 cm. Which of the following options is NOT correct?

- Ans**
- ☒ 1. $\angle TSR = 80^\circ$
 - ☒ 2. $\angle PRT = 60^\circ$
 - ☒ 3. $PR = RS$
 - ☒ 4. $TR = RQ$

Question ID : 264330148174
Status : Answered
Chosen Option : 1

Q.5 Ram can complete a piece of work in 18 days, Reena can complete the same work in 12 days, and with the help of Shyam, they finish the same work in six days. In how many days can Shyam alone complete the same work?

- Ans**
- ☒ 1. 42 days
 - ☒ 2. 36 days
 - ☒ 3. 30 days
 - ☒ 4. 24 days

Question ID : 264330147970
Status : Answered
Chosen Option : 2

Q.6 The curved surface area of a right circular cone of diameter 42 cm is 990 cm^2 . What is the slant height (in cm) of the cone? [Use $\pi = \frac{22}{7}$]

- Ans
- ☐ 1. 10
 - ☒ 2. 15
 - ☐ 3. 24
 - ☐ 4. 12

Question ID : 264330148049
Status : Answered
Chosen Option : 2

Q.7 A shopkeeper marks his goods 35% above cost price. He then allows some discount on it. If he makes a profit of 14%, then the rate of discount is:

- Ans
- ☐ 1. 17.77%
 - ☒ 2. 15.55%
 - ☐ 3. 16.66%
 - ☐ 4. 14.44%

Question ID : 264330149768
Status : Answered
Chosen Option : 2

Q.8 What is the third proportional to 12 and $6\sqrt{5}$?

- Ans
- ☐ 1. 12
 - ☒ 2. 15
 - ☐ 3. 18
 - ☐ 4. 21

Question ID : 264330150750
Status : Answered
Chosen Option : 2

Q.9 A mixture of 70 litres of wine and water contains 10% of water. How much water must be added to make the water $12\frac{1}{2}\%$ of the resulting mixture?

- Ans
- ☐ 1. 5 litres
 - ☐ 2. 3 litres
 - ☒ 3. 2 litres
 - ☐ 4. 4 litres

Question ID : 264330148232
Status : Answered
Chosen Option : 3

Q.10 The given expression is equal to: $(\cot B - \tan B) \cdot \sin B \cdot \cos B$

- Ans
- ☒ 1. $1 - 2\sec^2 B$
 - ☒ 2. $1 - 2\cos^2 B$
 - ☒ 3. $2\cos^2 B - 1$
 - ☒ 4. $2\sec^2 B - 1$

Question ID : 264330148110

Status : Answered

Chosen Option : 3

Q.11 The area of two similar triangles TUV and PQR are 18 cm^2 and 32 cm^2 , respectively. If $TU = 6 \text{ cm}$, then PQ is equal to:

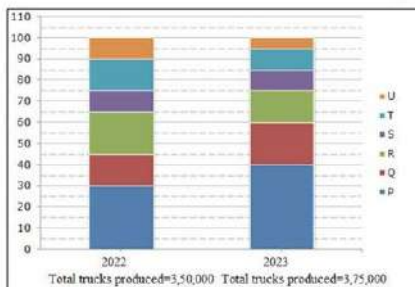
- Ans
- ☒ 1. 4 cm
 - ☒ 2. 8 cm
 - ☒ 3. 2 cm
 - ☒ 4. 64 cm

Question ID : 264330149279

Status : Answered

Chosen Option : 2

Q.12 Percentage distribution of Six different types of Trucks manufactured by a Company over Two Years is shown below.



How much more is the actual distribution of Truck Q in the year 2023 as compared to 2022?

- Ans
- ☒ 1. 23,500
 - ☒ 2. 22,500
 - ☒ 3. 20,400
 - ☒ 4. 19,800

Question ID : 264330148756

Status : Not Attempted and
Marked For Review

Chosen Option : --

Q.13 If $a - b = 5$ and $ab = 24$, find the value of $a^3 - b^3$.

- Ans**
- ☐ 1. 455
 - ☒ 2. 485
 - ☐ 3. 385
 - ☐ 4. 360

Question ID : 264330147691
Status : Answered
Chosen Option : 2

Q.14 If oranges are bought at 11 for ₹10 and sold at 10 for ₹11, what is the gain or loss percentage?

- Ans**
- ☐ 1. Gain = 11%
 - ☐ 2. Loss = 11%
 - ☐ 3. Loss = 21%
 - ☒ 4. Gain = 21%

Question ID : 264330147724
Status : Answered
Chosen Option : 4

Q.15 Anil and Arun started for car race from the same point in the same direction and at the same time on a circular track of length 2575 m with speeds 72 km/h and 90 km/h, respectively. After how much time (in seconds) will they meet again for the first time?

- Ans**
- ☐ 1. 520
 - ☐ 2. 525
 - ☐ 3. 510
 - ☒ 4. 515

Question ID : 264330149447
Status : Answered
Chosen Option : 4

Q.16 Which of the numbers amongst 25560, 35751, 48168, and 49608 is NOT divisible by 24?

- Ans**
- ☒ 1. 35751
 - ☐ 2. 48168
 - ☐ 3. 25560
 - ☐ 4. 49608

Question ID : 264330147884
Status : Answered
Chosen Option : 1

Q.17 The marked price of an article is ₹2,500 and selling price is ₹1,800, then the discount percentage is:

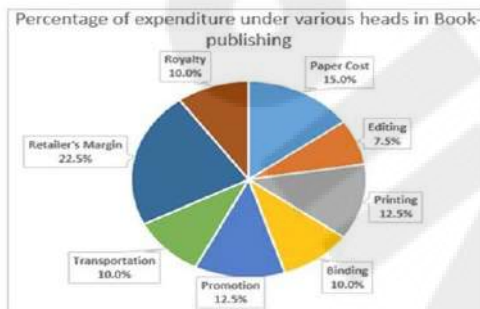
- Ans
- ☒ 1. 32%
 - ☒ 2. 28%
 - ☒ 3. 34%
 - ☒ 4. 27%

Question ID : 264330147999

Status : Answered

Chosen Option : 2

Q.18 The pie chart below gives the expenses under different heads that a publisher of books has to incur towards the cost of selling a book. All figures are given as percentages of the total expenditure incurred. If the amount spent on printing is ₹1,40,000, which of the options given below does NOT give correct information?



- Ans
- ☒ 1. Cost of paper is ₹1,68,000
 - ☒ 2. Cost of editing is ₹84,000
 - ☒ 3. Retailer's margin is ₹2,54,000
 - ☒ 4. Cost of transportation is ₹1,12,000

Question ID : 264330146806

Status : Answered

Chosen Option : 3

Q.19 If θ is an acute angle and $\sin\theta = \frac{43}{47}$, what is the value of $\cot\theta$?

- Ans
- ☒ 1. $\frac{6\sqrt{10}}{47}$
 - ☒ 2. $\frac{43}{6\sqrt{10}}$
 - ☒ 3. $\frac{47}{6\sqrt{10}}$
 - ☒ 4. $\frac{6\sqrt{10}}{43}$

Question ID : 264330146843

Status : Answered

Chosen Option : 4

Q.20 Simplify the expression:

$$\frac{1}{8} \left[\frac{1}{b-1} - \frac{1}{b+1} - \frac{2}{b^2+1} - \frac{4}{b^4+1} \right]$$

Ans

✓ 1. $\frac{1}{b^8-1}$

✗ 2. $\frac{8}{b^8+1}$

✗ 3. $\frac{8}{b^8-1}$

✗ 4. $\frac{1}{b^8+1}$

Question ID : 264330150569

Status : Answered

Chosen Option : 1

Q.21 If $\operatorname{cosec} \theta = \frac{17}{15}$, then what will be the value of $\cos \theta$?

Ans

✗ 1. $\frac{7}{17}$

✗ 2. 1

✓ 3. $\frac{8}{17}$

✗ 4. $\frac{15}{17}$

Question ID : 264330147917

Status : Answered

Chosen Option : 3

Q.22 If $a^2 + b^2 + c^2 = 160$ and $a + b + c = 16$, find $ab + bc + ca$.

Ans

✗ 1. 96

✗ 2. 84

✓ 3. 48

✗ 4. 42

Question ID : 264330148118

Status : Answered

Chosen Option : 3

Q.23 In 't' years, the simple interest earned on a certain amount at the rate of 10% per annum is $\frac{5}{8}$ th of the principal amount. If the rate of interest is made three-fourth of 10% and the simple interest remains the same, which of the following statements is true about the changed value of time?

- Ans
- ☐ 1. It remains the same as 't'.
 - ☐ 2. It becomes three-fourth of the time 't'.
 - ☒ 3. It increases to $8\frac{1}{3}$ years..
 - ☐ 4. It decreases to $5\frac{1}{2}$ years.

Question ID : 264330151408
Status : Answered
Chosen Option : 3

Q.24 An equilateral triangle has sides of 18 cm each. The ratio of the inradius to circumradius of the triangle is:

- Ans
- ☐ 1. 2 : 1
 - ☐ 2. 3 : 2
 - ☐ 3. 3 : 4
 - ☒ 4. 1 : 2

Question ID : 264330149339
Status : Answered
Chosen Option : 4

Q.25 The population of a certain village increases by 5 per cent annually. Its present population is 8200. After two year the population will be (approximately):

- Ans
- ☐ 1. 9200
 - ☐ 2. 9246
 - ☒ 3. 9040
 - ☐ 4. 9161

Question ID : 264330148245
Status : Answered
Chosen Option : 3

Section : General Awareness

Q.1 In 2022, Former Supreme Court Justice _____ was appointed chairperson of the New Delhi International Arbitration Centre (NDIAC) .

- Ans
- ☐ 1. Sanjay Kishan Kaul
 - ☒ 2. Hemant Gupta
 - ☐ 3. Pankaj Mithal
 - ☐ 4. Ajay Rastogi

Question ID : 264330150062
Status : Not Answered
Chosen Option : --

Q.2 Which of the following was the last invasion by Mahmud Ghazni outside Punjab?

- Ans** ☒ 1. Somnath
☐ 2. Mathura
☐ 3. Kalinjar
☐ 4. Kanauj

Question ID : 264330150090
Status : Answered
Chosen Option : 1

Q.3 In which year did India win its first Hockey World Cup for Men's?

- Ans** ☐ 1. 1971
☐ 2. 1979
☒ 3. 1975
☐ 4. 1983

Question ID : 264330145912
Status : Not Answered
Chosen Option : --

Q.4 Which colour of light from VIBGYOR has minimum wavelength?

- Ans** ☒ 1. Violet
☐ 2. Yellow
☐ 3. Green
☐ 4. Red

Question ID : 264330145812
Status : Answered
Chosen Option : 1

Q.5 Which of these regions received the first wave of the Green Revolution package?

- Ans** ☒ 1. Punjab
☐ 2. Kerala
☐ 3. Western Gujarat
☐ 4. Coastal Maharashtra

Question ID : 264330144731
Status : Answered
Chosen Option : 1

Q.6 Which of the following initiatives of the Government of India is aimed at developing and rejuvenating 75 water bodies in each district of the country as a part of the celebration of Azadi Ka Amrit Mahotsav?

- Ans**
- ☐ 1. Mission Amrit Clean Water
 - ☐ 2. Mission Amrit Water
 - ☒ 3. Mission Amrit Sarovar
 - ☐ 4. Mission Amrit District

Question ID : **264330150702**
Status : **Answered**
Chosen Option : **3**

Q.7 What was the prevalence of self-reported goitre or thyroid disorder in the National Family Health Survey [NFHS-V (2019-2021)]?

- Ans**
- ☒ 1. 2.9%
 - ☐ 2. 3.4%
 - ☐ 3. 4.2%
 - ☐ 4. 2.1%

Question ID : **264330145615**
Status : **Not Answered**
Chosen Option : --

Q.8 Which of these is a conventional weaker section lending under formal sector?

- Ans**
- ☐ 1. Money lenders
 - ☐ 2. Self help group bank linkage model
 - ☐ 3. Micro finance institutions
 - ☒ 4. Commercial banks priority sector lending

Question ID : **264330144681**
Status : **Not Answered**
Chosen Option : --

Q.9 The net worth of any bank is equal to _____.

- Ans**
- ☐ 1. liabilities – assets
 - ☒ 2. (reserves + loans) – liabilities
 - ☐ 3. interest + liabilities
 - ☐ 4. (reserves + loans) + liabilities

Question ID : **264330151339**
Status : **Answered**
Chosen Option : **2**

Q.10 Who among the following personalities is a Sarod Maestro?

- Ans
- ☐ 1. Ustad Bismillah Khan
 - ☐ 2. Ustad Zakir Hussain
 - ☐ 3. Hariprasad Chaurasia
 - ☒ 4. Ustad Amjad Ali Khan

Question ID : 264330145789
Status : Answered
Chosen Option : 4

Q.11 Which of the following metal salts is responsible for permanent hardness in water?

- Ans
- ☐ 1. KCl
 - ☐ 2. NaCl
 - ☐ 3. $\text{Ca}(\text{HCO}_3)_2$
 - ☒ 4. CaCl_2

Question ID : 264330145844
Status : Answered
Chosen Option : 3

Q.12 Who among the following personalities coined the term 'Odissi' for Odisha's classical dance?

- Ans
- ☒ 1. Kabichandra Kalicharan Patnaik
 - ☐ 2. Kelucharan Mohapatra
 - ☐ 3. Raja Rammohan Roy
 - ☐ 4. Rabindranath Tagore

Question ID : 264330145754
Status : Answered
Chosen Option : 1

Q.13 Deepavali is celebrated in which month of Hindu calendar?

- Ans
- ☐ 1. Magha
 - ☐ 2. Chaitra
 - ☐ 3. Ashwin
 - ☒ 4. Kartika

Question ID : 264330148664
Status : Answered
Chosen Option : 4

Q.14 According to Census of India 2011, which state in India has the highest population density?

- Ans**
- ☒ 1. Uttar Pradesh
 - ☒ 2. Bihar
 - ☒ 3. West Bengal
 - ☒ 4. Kerala

Question ID : **264330150280**
Status : **Answered**
Chosen Option : **3**

Q.15 Which of the following features of the Indian Constitution is NOT borrowed from the Canadian constitution?

- Ans**
- ☒ 1. Advisory jurisdiction of supreme court
 - ☒ 2. Federation with strong centre
 - ☒ 3. Concurrent list
 - ☒ 4. Appointment of state governor by the centre

Question ID : **264330146544**
Status : **Answered**
Chosen Option : **3**

Q.16 Which of the following is a kind of Xanthan?

- Ans**
- ☒ 1. Seed gum
 - ☒ 2. Seaweed gum
 - ☒ 3. Microbial gum
 - ☒ 4. Exudate gum

Question ID : **264330144481**
Status : **Not Answered**
Chosen Option : **--**

Q.17 The Muhammedan Literary Society founded in Calcutta in 1863 was founded by:

- Ans**
- ☒ 1. Nawab Abdul Latif
 - ☒ 2. Mirza Ghulam Ahmad
 - ☒ 3. Sayyid Ahmad
 - ☒ 4. Syed Ahmad Khan

Question ID : **264330150398**
Status : **Answered**
Chosen Option : **1**

Q.18 Which of the following states is the largest producer of jowar in India, as of 2020?

- Ans**
- ☐ 1. Telangana
 - ☐ 2. Karnataka
 - ☐ 3. Andhra Pradesh
 - ☒ 4. Maharashtra

Question ID : **264330150238**
Status : **Not Answered**
Chosen Option : --

Q.19 The structural part of the Indian Constitution is, to a large extent, derived from the Act of _____.

- Ans**
- ☐ 1. 1909
 - ☒ 2. 1935
 - ☐ 3. 1947
 - ☐ 4. 1919

Question ID : **264330146541**
Status : **Answered**
Chosen Option : 2

Q.20 Which of the following is a type of vegetation found in the Himalayan region?

- Ans**
- ☐ 1. Mangrove
 - ☐ 2. Pampas
 - ☐ 3. Savannah
 - ☒ 4. Alpine

Question ID : **264330149367**
Status : **Answered**
Chosen Option : 4

Q.21 Who among the following won the gold medal in the girls' under 15 category at the Asian Juniors Individual Squash Championship in June 2022?

- Ans**
- ☐ 1. Athithi Singh
 - ☒ 2. Anahat Singh
 - ☐ 3. Vidhi Goenka
 - ☐ 4. Vishwa Thakkar

Question ID : **264330154820**
Status : **Not Answered**
Chosen Option : --

Q.22 Padma Bhushan Kumari Kamala is associated with which Indian dance?

- Ans**
- ☒ 1. Kathakali
 - ☒ 2. Kathak
 - ☒ 3. Odissi
 - ☒ 4. Kuchipudi

Question ID : **264330144781**
Status : **Not Answered**
Chosen Option : --

Q.23 SRD Prasad received the Padma Shri in 2023, for his contribution to the sport of _____.

- Ans**
- ☒ 1. Jallikattu
 - ☒ 2. Kalaripayattu
 - ☒ 3. Boat Racing
 - ☒ 4. Seval Sandai

Question ID : **264330149933**
Status : **Not Answered**
Chosen Option : --

Q.24 While computing Net Economic Welfare (NEW), which of the following items is subtracted from GNP?

- Ans**
- ☒ 1. Value of leisure time
 - ☒ 2. Adjustments for congestion of urban life
 - ☒ 3. Do-it-yourself activities
 - ☒ 4. The underground economy

Question ID : **264330151270**
Status : **Not Answered**
Chosen Option : --

Q.25 In India, _____ fixes the CRR for the banks in the economy.

- Ans**
- ☒ 1. Reserve Bank of India
 - ☒ 2. Ministry of Finance
 - ☒ 3. Ministry of External Affairs
 - ☒ 4. State Bank of India

Question ID : **264330145713**
Status : **Not Answered**
Chosen Option : --