

Exam Date	01/08/2022
Exam Time	11:45 AM - 12:45 PM
Subject	Selection Post Phase X Matriculation Level

Section : General Intelligence

Q.1 In a code language, 'five times six' is written as '564' and 'eleven plus eight' is written as '756'. How will 'two minus one' be written in that language?

- Ans
- ☒ 1. 242
 - ☒ 2. 353
 - ☒ 3. 575
 - ☒ 4. 464

Question ID : 26433056275
Status : Answered
Chosen Option : 4

Q.2 Select the option that is related to the fifth term in the same way as the second term is related to the first term and the fourth term is related to the third term.
HELIPAD : HILOPED :: GROUND : GRUAND :: DELIGHT : ?

- Ans
- ☒ 1. DILOGHT
 - ☒ 2. DOLIGHT
 - ☒ 3. DELOGHT
 - ☒ 4. DALUGHT

Question ID : 26433055937
Status : Answered
Chosen Option : 1

Q.3 'P @ Q' means 'P is the mother of Q'
'P & Q' means 'P is the wife of Q'
'P # Q' means 'P is the husband of Q'
If 'A # B @ C @ D & E', then how is D related to A?

- Ans
- ☒ 1. Mother's mother
 - ☒ 2. Daughter's daughter
 - ☒ 3. Mother's father
 - ☒ 4. Daughter

Question ID : 26433056797
Status : Answered
Chosen Option : 2

Q.4 Which letter-cluster will replace the question mark (?) to complete the given series?

XSMP, WTKR, VUIT, ?, TWEX

- Ans
- ☐ 1. UVHW
 - ☒ 2. UVGV
 - ☐ 3. UWHV
 - ☐ 4. UWFX

Question ID : 26433055234

Status : Answered

Chosen Option : 2

Q.5 Two statements are given followed by three conclusions numbered I, II and III. Assuming the statements to be true, even if they seem to be at variance with commonly known facts, decide which of the conclusions logically follow(s) from the statements.

Statements:

All lotuses are roses.

All lotuses are hibiscuses.

Conclusions:

I. All roses are hibiscuses.

II. Some hibiscuses are lotuses.

III. Some roses are hibiscuses.

- Ans
- ☐ 1. Only conclusions I and III follow
 - ☐ 2. Only conclusions I and II follow
 - ☐ 3. All of the conclusions follow
 - ☒ 4. Only conclusions II and III follow

Question ID : 26433055692

Status : Answered

Chosen Option : 4

Q.6 Select the option that represents the correct order of the given words as they would appear in an English dictionary.

1.Loaves

2.Loans

3.Loaded

4.Loafer

5.Lonely

6.Loathsome

- Ans
- ☒ 1. 3, 4, 2, 6, 1, 5
 - ☐ 2. 6, 3, 4, 2, 1, 5
 - ☐ 3. 1, 3, 4, 2, 6, 5
 - ☐ 4. 2, 3, 4, 6, 1, 5

Question ID : 26433056258

Status : Answered

Chosen Option : 1

Q.7 Which letter-cluster will replace the question mark (?) to complete the given series?

ETGW, ?, INOM, KKSH, MHWC

- Ans
- ☐ 1. GRKS
 - ☒ 2. GQKR
 - ☐ 3. HQLR
 - ☐ 4. HRLS

Question ID : 26433055242

Status : Answered

Chosen Option : 2

Q.8 In a certain code language, 'FINE' is written as 'HKLC' and 'TOUR' is written as 'VQSP'. How will 'MILK' be written in that language?

- Ans
- ☒ 1. KGNM
 - ☒ 2. KGJI
 - ☒ 3. OKNM
 - ☒ 4. OKJI

Question ID : 26433056083

Status : Answered

Chosen Option : 4

Q.9 In a certain code language, 'ORANGE' is written as 'RONAEG' and 'NINETY' is written as 'INENYT'. How will 'TRAVEL' be written in that language?

- Ans
- ☒ 1. RTVALE
 - ☒ 2. ALTVRE
 - ☒ 3. VLTARE
 - ☒ 4. VERATL

Question ID : 26433056406

Status : Answered

Chosen Option : 1

Q.10 Select the option that represents the letters that, when sequentially placed from left to right in the following blanks, will complete the letter-series.

A _ _ U S _ P R _ S A P _ U _ A _ R U _

- Ans
- ☒ 1. PRAUSRPS
 - ☒ 2. PRUARSPS
 - ☒ 3. PRUAPSPS
 - ☒ 4. PRAURSPS

Question ID : 26433056159

Status : Answered

Chosen Option : 4

Q.11 Which letter cluster will replace the question mark (?) to complete the given series?
SVGQ, OCWD, ?, GQCD, CXSQ

- Ans
- ☒ 1. LQJM
 - ☒ 2. KCMS
 - ☒ 3. KJMQ
 - ☒ 4. LDCP

Question ID : 26433055662

Status : Not Attempted and
Marked For Review

Chosen Option : --

Q.12 Two statements are given followed by three conclusions numbered I, II and III.
Assuming the statements to be true, even if they seem to be at variance with commonly known facts, decide which of the conclusions logically follow(s) from the statements.

Statements:

All A are B.

Some A are C.

Conclusions:

I. Some B are C.

II. No C is B.

III. Some B are A.

Ans ☒ 1. Only conclusions II and III follow

☒ 2. Only conclusions I and II follow

☒ 3. All of the conclusions follow

☒ 4. Only conclusions I and III follow

Question ID : 26433055690

Status : Answered

Chosen Option : 4

Q.13 Three statements are given, followed by three conclusions numbered I, II and III.
Assuming the statements to be true, even if they seem to be at variance with commonly known facts, decide which of the conclusions logically follow(s) from the statements.

Statements:

Some fish are limes.

All limes are chairs.

Some chairs are big.

Conclusions:

I. Some limes are big.

II. Some fish are chairs.

III. All limes are fish.

Ans ☒ 1. None of the conclusions follows

☒ 2. Only conclusion III follows

☒ 3. Only conclusion I follows

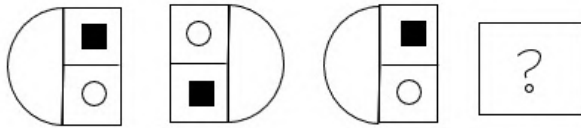
☒ 4. Only conclusion II follows

Question ID : 26433056216

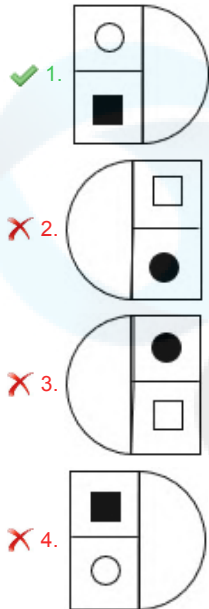
Status : Answered

Chosen Option : 4

Q.14 Select the figure that will replace the question mark (?) in the following figure series.



Ans



Question ID : 26433055716

Status : Answered

Chosen Option : 1

Q.15 Which two numbers (not digits of the numbers), from amongst the given options, should be interchanged to make the given equation correct?
 $12 \times 9 + 27 \div 3 - 5 = 60$

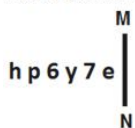
- Ans
- ☒ 1. 27 and 9
 - ☒ 2. 12 and 3
 - ☒ 3. 12 and 5
 - ☒ 4. 5 and 9

Question ID : 26433055969

Status : Answered

Chosen Option : 4

Q.16 Select the correct mirror image of the given figure when the mirror is placed at MN as shown below.



- Ans
- ☒ 1. e 7 ʌ θ p h
 - ☒ 2. e 7 γ θ q h
 - ☒ 3. e 7 γ θ q h
 - ☒ 4. e 7 ʌ θ p h

Question ID : 26433056970

Status : Answered

Chosen Option : 2

Q.17 Based on meaning/relevance of the words, News is related to Editor in the same way as Movie is related to _____.

- Ans
- ☐ 1. Lyricist
 - ☐ 2. Singer
 - ☐ 3. Theatre
 - ☒ 4. Director

Question ID : 26433055283

Status : Answered

Chosen Option : 4

Q.18 In a certain code language, 'FAITH' is written as 'JDMWL', and 'GLASS' is written as 'KOEUV'. How will 'HEART' be written in that language?

- Ans
- ☐ 1. LHFUX
 - ☒ 2. LHEUX
 - ☐ 3. LHEUY
 - ☐ 4. LHEWX

Question ID : 26433055701

Status : Answered

Chosen Option : 2

Q.19 Which number will replace the question mark (?) in the following series?
2, 3, 6, 18, 108, ?

- Ans
- ☐ 1. 1620
 - ☐ 2. 1188
 - ☐ 3. 648
 - ☒ 4. 1944

Question ID : 26433055291

Status : Not Attempted and
Marked For Review

Chosen Option : --

Q.20 Study the given pattern carefully and select the number that can replace the question mark (?) in it.

First row: 21, 12, 19

Second row: 27, 10, 19

Third row: 24, 10, ?

(NOTE : Operations should be performed on the whole numbers, without breaking down the numbers into its constituent digits. E.g. 13 – Operations on 13 such as adding/deleting/multiplying etc. to 13 can be performed. Breaking down 13 into 1 and 3 and then performing mathematical operations on 1 and 3 is not allowed)

- Ans
- ☐ 1. 19
 - ☐ 2. 16
 - ☒ 3. 18
 - ☐ 4. 17

Question ID : 26433068252

Status : Not Answered

Chosen Option : --

Q.21 In a code language, 'RAIN' is written as '18-1-9-14' and 'CLOUD' is written as '3-12-15-21-4'. How will 'WEATHER' be written in that language?

- Ans
- ☐ 1. 23-5-8-20-1-5-18
 - ☐ 2. 23-5-1-21-9-5-18
 - ☒ 3. 23-5-1-20-8-5-18
 - ☐ 4. 23-6-1-20-8-6-18

Question ID : 26433056746

Status : Answered

Chosen Option : 3

Q.22 In a code language, 'please come here' is written as '533' and 'bring the potatoes' is written as '427'. How will 'an early start' be written in that language?

- Ans
- ☐ 1. 255
 - ☐ 2. 155
 - ☐ 3. 366
 - ☒ 4. 144

Question ID : 26433056274

Status : Answered

Chosen Option : 4

Q.23 Select the option that represents the correct order of the given words as they would appear in an English dictionary.

1. Insurance
2. Insomnia
3. Insufficient
4. Instalment
5. Inscription
6. Instrument

- Ans
- ☐ 1. 5, 2, 4, 6, 1, 3
 - ☒ 2. 5, 2, 4, 6, 3, 1
 - ☐ 3. 2, 5, 4, 6, 3, 1
 - ☐ 4. 5, 2, 6, 4, 3, 1

Question ID : 26433056729

Status : Answered

Chosen Option : 2

Q.24 In a certain code language, 'FAN' is written as '63', and 'DEAR' is written as '112'. How will 'BABY' be written in that language?

- Ans
- ☐ 1. 115
 - ☒ 2. 120
 - ☐ 3. 130
 - ☐ 4. 110

Question ID : 26433055703

Status : Not Attempted and Marked For Review

Chosen Option : --

Q.25 Pointing to a person in a photograph, a man, Kabir, said, "She is the sister of my mother's daughter's daughter." How is the person related to Kabir?

- Ans
- ☒ 1. Sister's daughter
 - ☐ 2. Daughter
 - ☐ 3. Wife
 - ☐ 4. Sister

Question ID : 26433055663
Status : Answered
Chosen Option : 1

Section : English Language

Q.1 Select the correctly spelt word to fill in the blank.

The _____ of a place is the total number of citizens of the place having voting rights.

- Ans
- ☐ 1. electrate
 - ☐ 2. electroate
 - ☐ 3. elektorate
 - ☒ 4. electorate

Question ID : 26433060520
Status : Answered
Chosen Option : 4

Q.2 Select the most appropriate meaning of the given idiom.

Out of spirits

- Ans
- ☐ 1. To blunder
 - ☐ 2. To disclose
 - ☐ 3. Cheerful or joyful
 - ☒ 4. Gloomy or sad

Question ID : 26433060226
Status : Answered
Chosen Option : 4

Q.3 Select the option that expresses the given sentence in active voice.

The court verdict had been challenged by the officer.

- Ans
- ☐ 1. The officer challenged the court verdict.
 - ☒ 2. The officer had challenged the court verdict.
 - ☐ 3. The officer has challenged the court verdict.
 - ☐ 4. The officer was challenging the court verdict.

Question ID : 26433060608
Status : Answered
Chosen Option : 2

Q.4 Select the option that can be used as a one-word substitute for the given group of words.

An official inspection of a company's, or individual's, accounts

- Ans
- ☒ 1. Survey
 - ☒ 2. Documentation
 - ☒ 3. Audit
 - ☒ 4. Audition

Question ID : 26433060295

Status : Answered

Chosen Option : 3

Q.5 Select the option that can be used as a one-word substitute for the given group of words.

The inner soft part of a seed, fruit or nut

- Ans
- ☒ 1. Kernel
 - ☒ 2. Pulp
 - ☒ 3. Peel
 - ☒ 4. Bud

Question ID : 26433060298

Status : Answered

Chosen Option : 2

Q.6 Select the most appropriate ANTONYM of the underlined word.

Jack said he is unfortunate to win the jackpot.

- Ans
- ☒ 1. sensible
 - ☒ 2. bad
 - ☒ 3. untimely
 - ☒ 4. lucky

Question ID : 26433059730

Status : Answered

Chosen Option : 4

Q.7 Select the most appropriate meaning of the given idiom.

Hard cash

- Ans
- ☒ 1. Cash in the form of gold
 - ☒ 2. Notes and coins as opposed to cheques and ATM cards
 - ☒ 3. Currencies that can be paid only in gold
 - ☒ 4. Cash that cannot be transformed into liquid cash

Question ID : 26433060902

Status : Answered

Chosen Option : 3

Q.8 Select the INCORRECTLY spelt word.

- Ans
- ☒ 1. Abdicate
 - ☒ 2. Juvenile
 - ☒ 3. Dumbell
 - ☒ 4. Abbreviate

Question ID : 26433060206
Status : Answered
Chosen Option : 2

Q.9 Select the most appropriate ANTONYM of the underlined word.

The criminal offered his testimony before the jury.

- Ans
- ☒ 1. denial
 - ☒ 2. deputation
 - ☒ 3. time
 - ☒ 4. jokes

Question ID : 26433059823
Status : Answered
Chosen Option : 1

Q.10 Select the most appropriate option to replace the underlined word in the given sentence.

What an epic journey! I love the whole concept.

- Ans
- ☒ 1. narration
 - ☒ 2. story
 - ☒ 3. belief
 - ☒ 4. notion

Question ID : 26433059998
Status : Answered
Chosen Option : 4

Q.11 Select the option that expresses the given sentence in indirect speech.

The professor asked, "How many of you can afford a trip to New York?"

- Ans
- ☒ 1. The professor asked how many of you can afford a trip to New York.
 - ☒ 2. The professor asked how many of them can afford a trip to New York.
 - ☒ 3. The professor asked how many of us could have afforded a trip to New York.
 - ☒ 4. The professor asked how many of them could afford a trip to New York.

Question ID : 26433060613
Status : Answered
Chosen Option : 3

Q.12 Select the most appropriate synonym of the given word.

Distribute

- Ans**
- ☒ 1. Practice
 - ☒ 2. Impress
 - ☒ 3. Oblige
 - ☒ 4. Circulate

Question ID : 26433060622

Status : Answered

Chosen Option : 4

Q.13 Select the most appropriate option to fill in the blank.

The professor was very happy to see that John was a _____ student.

- Ans**
- ☒ 1. sunny
 - ☒ 2. diligent
 - ☒ 3. careless
 - ☒ 4. cunning

Question ID : 26433060088

Status : Answered

Chosen Option : 2

Q.14 Select the option that can be used as a one-word substitute for the given group of words.

An arrangement of flowers that is usually given as present.

- Ans**
- ☒ 1. Bouquet
 - ☒ 2. Inflorescence
 - ☒ 3. Decoration
 - ☒ 4. Bunch

Question ID : 26433059698

Status : Answered

Chosen Option : 1

Q.15 Select the correctly spelt word to fill in the blank.

There can be maximum twelve light fittings on a _____.

- Ans**
- ☒ 1. cirkit
 - ☒ 2. Sirkit
 - ☒ 3. circkit
 - ☒ 4. circuit

Question ID : 26433060515

Status : Answered

Chosen Option : 4

Comprehension:

Coral reefs are vital to both human societies and the ocean's ecosystem—they protect shorelines from storm surges and erosion and serve as nurseries for marine life. They're also frighteningly imperiled by warming waters, which produce conditions that turn them a ghostly white and expose them to a blanket of algae. That's what Kim Cobb saw one day in 2016 when she swam up to the reef in the central Pacific's Line Island chain that she'd been studying for 18 years. A heat wave had killed or bleached 95 per cent of the corals.

"It was carnage," the Georgia Tech climate scientist recalls. Disturbances like pollution and fishing are relatively limited in the vicinity of the research site, so Cobb felt rising ocean temperatures were the likely culprit. The impact has already been devastating, she says, adding, "I can't even imagine what it would look like at 2 degrees Celsius."

If warming can be limited, however, there might be hope for the corals that remain. Scientists like Hollie Putnam are engineering so-called super corals with the ability to withstand higher ocean temperatures and acidity levels. Putnam, a marine biologist at the University of Rhode Island, places coral species under climate change stressors and breeds those that survive best, creating hyper-resilient organisms. "They're really exciting and really hopeful," Putnam says, noting that super corals could help maintain the biodiversity and genetic diversity of already struggling reefs, like the ones in the Line Island Chain.

But super corals are more likely to survive if warming doesn't get much worse. "If we push the climate system to 2 degrees Celsius, we're talking about 1 per cent of reefs surviving," Cobb says. "That makes it less likely that coral-resilience engineering efforts will succeed." She says it's essential to limit warming to 1.5 degrees, a scenario in which up to 30 per cent of reefs could survive on their own. If that happens, one of the world's wildest reefs could be strengthened. If it doesn't, even the savviest engineering intervention won't be enough.

SubQuestion No : 16

Q.16 Select the most appropriate synonym of the word surges stated in para1 of the given passage.

- Ans
- ☒ 1. Diminishes
 - ☒ 2. Contracts
 - ☒ 3. Gushes
 - ☒ 4. Decreases

Question ID : 26433072140

Status : Answered

Chosen Option : 3

Comprehension:

Coral reefs are vital to both human societies and the ocean's ecosystem—they protect shorelines from storm surges and erosion and serve as nurseries for marine life. They're also frighteningly imperiled by warming waters, which produce conditions that turn them a ghostly white and expose them to a blanket of algae. That's what Kim Cobb saw one day in 2016 when she swam up to the reef in the central Pacific's Line Island chain that she'd been studying for 18 years. A heat wave had killed or bleached 95 per cent of the corals.

"It was carnage," the Georgia Tech climate scientist recalls. Disturbances like pollution and fishing are relatively limited in the vicinity of the research site, so Cobb felt rising ocean temperatures were the likely culprit. The impact has already been devastating, she says, adding, "I can't even imagine what it would look like at 2 degrees Celsius."

If warming can be limited, however, there might be hope for the corals that remain. Scientists like Hollie Putnam are engineering so-called super corals with the ability to withstand higher ocean temperatures and acidity levels. Putnam, a marine biologist at the University of Rhode Island, places coral species under climate change stressors and breeds those that survive best, creating hyper-resilient organisms. "They're really exciting and really hopeful," Putnam says, noting that super corals could help maintain the biodiversity and genetic diversity of already struggling reefs, like the ones in the Line Island Chain.

But super corals are more likely to survive if warming doesn't get much worse. "If we push the climate system to 2 degrees Celsius, we're talking about 1 per cent of reefs surviving," Cobb says. "That makes it less likely that coral-resilience engineering efforts will succeed." She says it's essential to limit warming to 1.5 degrees, a scenario in which up to 30 per cent of reefs could survive on their own. If that happens, one of the world's wildest reefs could be strengthened. If it doesn't, even the savviest engineering intervention won't be enough.

SubQuestion No : 17

Q.17 Select the most appropriate synonym of the word erosion stated in para1 of the given passage.

- Ans
- ☐ 1. Increase
 - ☐ 2. Buildup
 - ☒ 3. Attrition
 - ☐ 4. Gain

Question ID : 26433072141

Status : Answered

Chosen Option : 3

Comprehension:

Coral reefs are vital to both human societies and the ocean's ecosystem—they protect shorelines from storm surges and erosion and serve as nurseries for marine life. They're also frighteningly imperiled by warming waters, which produce conditions that turn them a ghostly white and expose them to a blanket of algae. That's what Kim Cobb saw one day in 2016 when she swam up to the reef in the central Pacific's Line Island chain that she'd been studying for 18 years. A heat wave had killed or bleached 95 per cent of the corals.

"It was carnage," the Georgia Tech climate scientist recalls. Disturbances like pollution and fishing are relatively limited in the vicinity of the research site, so Cobb felt rising ocean temperatures were the likely culprit. The impact has already been devastating, she says, adding, "I can't even imagine what it would look like at 2 degrees Celsius."

If warming can be limited, however, there might be hope for the corals that remain. Scientists like Hollie Putnam are engineering so-called super corals with the ability to withstand higher ocean temperatures and acidity levels. Putnam, a marine biologist at the University of Rhode Island, places coral species under climate change stressors and breeds those that survive best, creating hyper-resilient organisms. "They're really exciting and really hopeful," Putnam says, noting that super corals could help maintain the biodiversity and genetic diversity of already struggling reefs, like the ones in the Line Island Chain.

But super corals are more likely to survive if warming doesn't get much worse. "If we push the climate system to 2 degrees Celsius, we're talking about 1 per cent of reefs surviving," Cobb says. "That makes it less likely that coral-resilience engineering efforts will succeed." She says it's essential to limit warming to 1.5 degrees, a scenario in which up to 30 per cent of reefs could survive on their own. If that happens, one of the world's wildest reefs could be strengthened. If it doesn't, even the savviest engineering intervention won't be enough.

SubQuestion No : 18

Q.18 Select the most appropriate synonym of the word imperiled stated in para1 of the given passage.

- Ans
- ☐ 1. Sheltered
 - ☐ 2. Protected
 - ☒ 3. Endangered
 - ☐ 4. Preserved

Question ID : 26433072142

Status : Answered

Chosen Option : 3

Comprehension:

Coral reefs are vital to both human societies and the ocean's ecosystem—they protect shorelines from storm surges and erosion and serve as nurseries for marine life. They're also frighteningly imperiled by warming waters, which produce conditions that turn them a ghostly white and expose them to a blanket of algae. That's what Kim Cobb saw one day in 2016 when she swam up to the reef in the central Pacific's Line Island chain that she'd been studying for 18 years. A heat wave had killed or bleached 95 per cent of the corals.

"It was carnage," the Georgia Tech climate scientist recalls. Disturbances like pollution and fishing are relatively limited in the vicinity of the research site, so Cobb felt rising ocean temperatures were the likely culprit. The impact has already been devastating, she says, adding, "I can't even imagine what it would look like at 2 degrees Celsius."

If warming can be limited, however, there might be hope for the corals that remain. Scientists like Hollie Putnam are engineering so-called super corals with the ability to withstand higher ocean temperatures and acidity levels. Putnam, a marine biologist at the University of Rhode Island, places coral species under climate change stressors and breeds those that survive best, creating hyper-resilient organisms. "They're really exciting and really hopeful," Putnam says, noting that super corals could help maintain the biodiversity and genetic diversity of already struggling reefs, like the ones in the Line Island Chain.

But super corals are more likely to survive if warming doesn't get much worse. "If we push the climate system to 2 degrees Celsius, we're talking about 1 per cent of reefs surviving," Cobb says. "That makes it less likely that coral-resilience engineering efforts will succeed." She says it's essential to limit warming to 1.5 degrees, a scenario in which up to 30 per cent of reefs could survive on their own. If that happens, one of the world's wildest reefs could be strengthened. If it doesn't, even the savviest engineering intervention won't be enough.

SubQuestion No : 19

Q.19 Select the most appropriate synonym of the word bleached stated in para 1 of the given passage.

Ans ✓ 1. Coloured

✗ 2. Brunet

✗ 3. discoloured

✗ 4. Hued

Question ID : 26433072143

Status : Answered

Chosen Option : 3

Comprehension:

Coral reefs are vital to both human societies and the ocean's ecosystem—they protect shorelines from storm surges and erosion and serve as nurseries for marine life. They're also frighteningly imperiled by warming waters, which produce conditions that turn them a ghostly white and expose them to a blanket of algae. That's what Kim Cobb saw one day in 2016 when she swam up to the reef in the central Pacific's Line Island chain that she'd been studying for 18 years. A heat wave had killed or bleached 95 per cent of the corals.

"It was carnage," the Georgia Tech climate scientist recalls. Disturbances like pollution and fishing are relatively limited in the vicinity of the research site, so Cobb felt rising ocean temperatures were the likely culprit. The impact has already been devastating, she says, adding, "I can't even imagine what it would look like at 2 degrees Celsius."

If warming can be limited, however, there might be hope for the corals that remain. Scientists like Hollie Putnam are engineering so-called super corals with the ability to withstand higher ocean temperatures and acidity levels. Putnam, a marine biologist at the University of Rhode Island, places coral species under climate change stressors and breeds those that survive best, creating hyper-resilient organisms. "They're really exciting and really hopeful," Putnam says, noting that super corals could help maintain the biodiversity and genetic diversity of already struggling reefs, like the ones in the Line Island Chain.

But super corals are more likely to survive if warming doesn't get much worse. "If we push the climate system to 2 degrees Celsius, we're talking about 1 per cent of reefs surviving," Cobb says. "That makes it less likely that coral-resilience engineering efforts will succeed." She says it's essential to limit warming to 1.5 degrees, a scenario in which up to 30 per cent of reefs could survive on their own. If that happens, one of the world's wildest reefs could be strengthened. If it doesn't, even the savviest engineering intervention won't be enough.

SubQuestion No : 20

Q.20 Select the most appropriate synonym of the word vicinity stated in para2 of the given passage.

Ans ☒ 1. Neighbourhood

☐ 2. Remoteness

☐ 3. Removal

☐ 4. Distance

Question ID : 26433072144

Status : Answered

Chosen Option : 1

Comprehension:

Read the given passage and answer the questions that follow.

No other nation can produce a book collector on quite the heroic scale of Sir Thomas Philips (1792–1872), who in 50 years amassed the greatest private library the world has ever seen, spending on it some £250,000 (add two noughts for inflation). Few other nations can produce such dedicated book loonies as Bernard Levin, who has been advised that should he ever be rash enough to display on shelves the tons of books he has amassed so far, he would assuredly bring the walls of his London apartment crashing about his ears.

SubQuestion No : 21

Q.21 Fill in the blank with the correct information from the passage:

Sir Thomas amassed the greatest private library the world has ever seen, spending on it some _____.

Ans ☐ 1. £350,000

☐ 2. £550,000

☒ 3. £250,000

☐ 4. £150,000

Question ID : 26433076154

Status : Answered

Chosen Option : 3

Comprehension:

Read the given passage and answer the questions that follow.

No other nation can produce a book collector on quite the heroic scale of Sir Thomas Philips (1792–1872), who in 50 years amassed the greatest private library the world has ever seen, spending on it some £250,000 (add two noughts for inflation). Few other nations can produce such dedicated book loonies as Bernard Levin, who has been advised that should he ever be rash enough to display on shelves the tons of books he has amassed so far, he would assuredly bring the walls of his London apartment crashing about his ears.

SubQuestion No : 22

Q.22 Fill in the blank with the correct information from the passage:

Few other nations can produce such dedicated book loonies as _____.

- Ans
- ☐ 1. Leonard Cohen
 - ☐ 2. Sir Philip
 - ☐ 3. Sir Thomas
 - ☒ 4. Bernard Levin

Question ID : 26433076155

Status : Answered

Chosen Option : 4

Comprehension:

Read the given passage and answer the questions that follow.

No other nation can produce a book collector on quite the heroic scale of Sir Thomas Philips (1792–1872), who in 50 years amassed the greatest private library the world has ever seen, spending on it some £250,000 (add two noughts for inflation). Few other nations can produce such dedicated book loonies as Bernard Levin, who has been advised that should he ever be rash enough to display on shelves the tons of books he has amassed so far, he would assuredly bring the walls of his London apartment crashing about his ears.

SubQuestion No : 23

Q.23 Read the passage and answer the following question:

Who can produce a book collector on quite the heroic scale of Sir Thomas Philips?

- Ans
- ☐ 1. A few nations
 - ☐ 2. All nations
 - ☒ 3. No other nation
 - ☐ 4. Very few nations

Question ID : 26433076152

Status : Answered

Chosen Option : 3

Comprehension:

Read the given passage and answer the questions that follow.

No other nation can produce a book collector on quite the heroic scale of Sir Thomas Philips (1792–1872), who in 50 years amassed the greatest private library the world has ever seen, spending on it some £250,000 (add two noughts for inflation). Few other nations can produce such dedicated book loonies as Bernard Levin, who has been advised that should he ever be rash enough to display on shelves the tons of books he has amassed so far, he would assuredly bring the walls of his London apartment crashing about his ears.

SubQuestion No : 24

Q.24 Fill in the blank with the correct information from the passage:

Levin has been warned never to display his humungous collection of books on shelves, as their weight could bring _____.

- Ans
- ☐ 1. the ceiling of his apartment crashing about his ears
 - ☒ 2. the walls of his London apartment crashing about his ears
 - ☐ 3. the kitchen and reading room crashing about his ears
 - ☐ 4. the adjacent balcony crashing about his ears

Comprehension:

Read the given passage and answer the questions that follow.

No other nation can produce a book collector on quite the heroic scale of Sir Thomas Philips (1792–1872), who in 50 years amassed the greatest private library the world has ever seen, spending on it some £250,000 (add two noughts for inflation). Few other nations can produce such dedicated book loonies as Bernard Levin, who has been advised that should he ever be rash enough to display on shelves the tons of books he has amassed so far, he would assuredly bring the walls of his London apartment crashing about his ears.

SubQuestion No : 25

Q.25 Fill in the blank with the correct information from the passage:

Sir Thomas Philips in _____ years amassed the greatest private library.

- Ans
- ☐ 1. 60
 - ☐ 2. 40
 - ☐ 3. 30
 - ☒ 4. 50

Question ID : 26433076153

Status : Answered

Chosen Option : 4

Section : Quantitative Aptitude

Q.1 A man can row a boat at 10km/h in still water. If the speed of the stream is 7km/h, what is the time taken to row a distance of 85 km down the stream?

- Ans
- ☒ 1. 5 hours
 - ☐ 2. 4 hours
 - ☐ 3. 6 hours
 - ☐ 4. 3hours

Question ID : 26433063891

Status : Answered

Chosen Option : 1

Q.2 A hemisphere has 14 cm diameter. Find its volume.

- Ans
- ☐ 1. 818.60 cm³
 - ☐ 2. 650.50 cm³
 - ☐ 3. 790.20 cm³
 - ☒ 4. 718.67 cm³

Question ID : 26433061286

Status : Answered

Chosen Option : 4

Q.3 The present population of a city is 60,000. If the rate of increase is 10% per year, find the population of the city after 2 years.

- Ans
- ☒ 1. 72600
 - ☐ 2. 71600
 - ☐ 3. 72000
 - ☐ 4. 70600

Question ID : 26433064027

Status : Answered

Chosen Option : 1

Q.4 6 men earn as much as 7 women, 2 women earn as much as 3 boys, 4 boys earn as much as 5 girls. If 5 girls earn Rs.400 a week, how much does a man earn in a week?

- Ans ☒ 1. Rs.195
☒ 2. Rs.175
☒ 3. Rs.200
☒ 4. Rs.180

Question ID : 26433063877
Status : Answered
Chosen Option : 2

Q.5 The bodyweight of eight members of a club is recorded as 69 kg, 63 kg, 72 kg, 76 kg, 82 kg, 93 kg, 59 kg, and 55 kg. What is the average body weight of all the eight members?

- Ans ☒ 1. 71.13 kg
☒ 2. 61.13 kg
☒ 3. 75.15 kg
☒ 4. 73.50 kg

Question ID : 26433061238
Status : Answered
Chosen Option : 1

Q.6 On selling 2800 school bags, Anita earns a profit equal to the sale price of 420 school bags. What is the gain percentage that Anita earned?
Note: round off to two decimal places

- Ans ☒ 1. 15.85%
☒ 2. 20.5%
☒ 3. 18.57%
☒ 4. 17.65%

Question ID : 26433063314
Status : Marked For Review
Chosen Option : 1

Q.7 If X and Y have incomes in the ratio 5 : 3 and expenditures in the ratio 3 : 1 and each one of them saves ₹27,000, then what is the income of X?

- Ans ☒ 1. ₹68,500
☒ 2. ₹70,000
☒ 3. ₹67,500
☒ 4. ₹69,500

Question ID : 26433058660
Status : Answered
Chosen Option : 3

Q.8 If the market price of a bedsheet is 24% above the cost price and a discount of 15% is declared on it, then find the gain percentage.

- Ans
- ☒ 1. 5.3%
 - ☒ 2. 5.1%
 - ☒ 3. 5.2%
 - ☒ 4. 5.4%

Question ID : 26433063400
Status : Answered
Chosen Option : 4

Q.9 If 23% of 'x' is 46, then 'x' is _____.

- Ans
- ☒ 1. 100
 - ☒ 2. 400
 - ☒ 3. 300
 - ☒ 4. 200

Question ID : 26433061193
Status : Answered
Chosen Option : 4

Q.10 The third proportional to $7\frac{1}{5}$ and 11 is:

- Ans
- ☒ 1. $16\frac{29}{36}$
 - ☒ 2. $15\frac{29}{36}$
 - ☒ 3. $16\frac{31}{36}$
 - ☒ 4. $16\frac{19}{36}$

Question ID : 26433063713
Status : Answered
Chosen Option : 1

Q.11 Find the simplest value of $5\frac{2}{3} \times 2\frac{1}{6} - 2\frac{1}{3}$.

- Ans
- ☒ 1. $7\frac{13}{18}$
 - ☒ 2. $8\frac{17}{18}$
 - ☒ 3. $9\frac{17}{18}$
 - ☒ 4. $9\frac{17}{20}$

Question ID : 26433063444
Status : Answered
Chosen Option : 3

Q.12 Raju can complete a piece of job in 15 hours, Vinay in 20 hours and Vardhan in 30 hours. If they work together and they are paid Rs.7,200 for the job, then what amount would Vinay receive?

- Ans
- ☐ 1. Rs.1,600
 - ☐ 2. Rs.4,000
 - ☐ 3. Rs.3,200
 - ☒ 4. Rs.2,400

Question ID : 26433061222

Status : Answered

Chosen Option : 4

Q.13 P and Q can do a piece of work in 36 days, Q and R can do it in 60 days, and P and R can do it in 45 days. When P, Q and R work together, how much work is finished by them in 5 days?

- Ans
- ☐ 1. $\frac{1}{10}$
 - ☐ 2. $\frac{1}{8}$
 - ☐ 3. $\frac{1}{5}$
 - ☒ 4. $\frac{1}{6}$

Question ID : 26433064035

Status : Answered

Chosen Option : 4

Q.14 The perimeter of the rectangle is 280 m and the difference between its two sides is 40 m. Find the side of a square whose area is equal to the area of this rectangle.

- Ans
- ☐ 1. $45\sqrt{6}$ m
 - ☒ 2. $30\sqrt{5}$ m
 - ☐ 3. $30\sqrt{6}$ m
 - ☐ 4. $45\sqrt{5}$ m

Question ID : 26433065013

Status : Not Attempted and Marked For Review

Chosen Option : --

Q.15 Ram buys 13 balls for Rs.390 and sells them at the rate of Rs.33 per ball. Find his gain percentage.

- Ans
- ☐ 1. 11.5%
 - ☒ 2. 10%
 - ☐ 3. 10.5%
 - ☐ 4. 11%

Question ID : 26433064969

Status : Answered

Chosen Option : 2

Q.16 A person covers a distance of 40 km by bus in 70 mins. After deboarding the bus, he took a rest for 40 mins and covered another 20 km by taxi in 40 mins. Find his average speed for the whole journey.

- Ans
- ☐ 1. 26 km/h
 - ☐ 2. 34 km/h
 - ☐ 3. 20 km/h
 - ☒ 4. 24 km/h

Question ID : 26433061272

Status : Answered

Chosen Option : 4

Q.17 In an election, there were three candidates – A, B and C. The winner, A, got five times the votes received by C. B got 240 votes which was 1.5 times the votes of C. How many total votes were polled in the election if there were no bogus votes?

- Ans
- ☐ 1. 1500
 - ☐ 2. 1400
 - ☐ 3. 1600
 - ☒ 4. 1200

Question ID : 26433063303

Status : Answered

Chosen Option : 4

Q.18 A bus covers the first 80 km at a speed of 40 km/h. It covers the next 100 km at a speed of 50 km/h. What is its average speed?

- Ans
- ☒ 1. 45 km/ h
 - ☐ 2. 42 km/h
 - ☐ 3. 44 km/h
 - ☐ 4. 46 km/h

Question ID : 26433063380

Status : Answered

Chosen Option : 1

Q.19 At a college NSS camp, there is food provisions for 320 students for 38 days. If 60 more students join the NSS camp on the first day itself, then for how many days will the provisions last?

- Ans
- ☐ 1. 34
 - ☐ 2. 35
 - ☐ 3. 33
 - ☒ 4. 32

Question ID : 26433063413

Status : Answered

Chosen Option : 4

Q.20 Which least number should be subtracted from 5825 to make it a perfect square?

- Ans
- ☐ 1. 48
 - ☐ 2. 42
 - ☒ 3. 49
 - ☐ 4. 46

Question ID : 26433063843

Status : Answered

Chosen Option : 4

Q.21 A man invested a total of Rs.16,50,000 in the names of his two daughters aged 15 years and 17 years, respectively, such that they get equal amounts when they are 20 years old. If the rate of interest is 25% per annum, compounded annually, then how much money (in Rs., to the nearest tens) should be deposited in the name of his younger daughter?

- Ans
- ☐ 1. 8,54,650
 - ☐ 2. 7,23,600
 - ☐ 3. 9,30,640
 - ☒ 4. 6,43,900

Question ID : 26433063229

Status : Not Answered

Chosen Option : --

Q.22 If the selling price of 10 chairs is the same as the cost price of 8 chairs, find the loss percentage.

- Ans
- ☐ 1. 22%
 - ☐ 2. 18%
 - ☒ 3. 20%
 - ☐ 4. 15%

Question ID : 26433063928

Status : Answered

Chosen Option : 3

Q.23 Find the simple interest on Rs.3,500 at 10% p.a. for 7 years.

- Ans
- ☒ 1. Rs.2,450
 - ☐ 2. Rs.2,500
 - ☐ 3. Rs.3,000
 - ☐ 4. Rs.2,050

Question ID : 26433063488

Status : Answered

Chosen Option : 1

Q.24 If the MP is Rs.650/- and discount is 10%, then the SP is _____.

- Ans
- ☐ 1. Rs.685
 - ☐ 2. Rs.689
 - ☒ 3. Rs.585
 - ☐ 4. Rs.589

Question ID : 26433061203

Status : Answered

Chosen Option : 3

Q.25 What is the average of the following numbers?
20.54, 11.51, 13.71, 18.31, 17.53

- Ans
- ☐ 1. 18.35
 - ☐ 2. 32.10
 - ☒ 3. 16.32
 - ☐ 4. 21.62

Question ID : 26433064892

Status : Answered

Chosen Option : 3

Q.1 'Bibi ka Maqbara' at Aurangabad is situated in which of the following states of India?

- Ans
- ☐ 1. Madhya Pradesh
 - ☐ 2. Rajasthan
 - ☒ 3. Maharashtra
 - ☐ 4. Punjab

Question ID : 26433054166
Status : Answered
Chosen Option : 3

Q.2 The 'Blood Sugar' disease is also known as:

- Ans
- ☐ 1. Low blood pressure
 - ☐ 2. High blood pressure
 - ☐ 3. Cancer
 - ☒ 4. Diabetes

Question ID : 26433076773
Status : Answered
Chosen Option : 4

Q.3 Which of the following classical dance forms was patronised by the Nawab of Awadh, Wajid Ali Shah?

- Ans
- ☐ 1. Odissi
 - ☐ 2. Manipuri
 - ☐ 3. Kuchipudi
 - ☒ 4. Kathak

Question ID : 26433054310
Status : Not Attempted and Marked For Review
Chosen Option : --

Q.4 Who among the following court poets of Samudragupta, wrote poetic appreciations for him during the Gupta period?

- Ans
- ☒ 1. Harishena
 - ☐ 2. Shudraka
 - ☐ 3. Kalidasa
 - ☐ 4. Visakhadutta

Question ID : 26433065505
Status : Answered
Chosen Option : 1

Q.5 Who contributed in the development of the periodic table?

- Ans
- ☐ 1. Gregor Mendel
 - ☐ 2. J J Thomson
 - ☐ 3. Isaac Newton
 - ☒ 4. Dmitri Mendeleev

Question ID : 26433053980
Status : Answered
Chosen Option : 4

Q.6 Ali Akbar Khan was associated with which instrument?

- Ans
- ☐ 1. Flute
 - ☒ 2. Sarod
 - ☐ 3. Sitar
 - ☐ 4. Drums

Question ID : 26433054386
Status : Not Answered
Chosen Option : --

Q.7 Which of the following statements is correct about nutrients?

- Ans
- ☐ 1. Nutrients are required only in small amount.
 - ☐ 2. Fat is the only nutrient rich food.
 - ☒ 3. Nutrients are molecules that all organisms need for growth, development and reproduction.
 - ☐ 4. Nutrients are not necessary for energy generation.

Question ID : 26433054032
Status : Marked For Review
Chosen Option : 4

Q.8 The 35th Summer Olympics will be held in ____.

- Ans
- ☒ 1. Australia
 - ☐ 2. The US
 - ☐ 3. Brazil
 - ☐ 4. South Africa

Question ID : 26433054676
Status : Answered
Chosen Option : 3

Q.9 Which of the following national festivals is celebrated to mark the day when the Constitution of India came into effect?

- Ans
- ☒ 1. Republic Day
 - ☐ 2. National Youth Day
 - ☐ 3. Voters' Day
 - ☐ 4. Independence Day

Question ID : 26433054145
Status : Answered
Chosen Option : 1

Q.10 In which of the following years did Turkish ruler, Timur Lang invade India?

- Ans
- ☐ 1. 1387
 - ☒ 2. 1398
 - ☐ 3. 1412
 - ☐ 4. 1407

Question ID : 26433065526
Status : Answered
Chosen Option : 2

Q.11 Who is the 15th Chief Minister (CM) of Assam appointed on 10 May 2021?

- Ans
- ☐ 1. Sarbananda Sonowal
 - ☐ 2. Prafulla Kumar Mahanta
 - ☐ 3. Ripun Bora
 - ☒ 4. Dr Himanta Biswa Sarma

Question ID : **26433069831**
Status : **Answered**
Chosen Option : **4**

Q.12 Under the Regulating Act, 1773, in which of the following places was the Supreme Court established in British India?

- Ans
- ☐ 1. Bombay
 - ☐ 2. Delhi
 - ☐ 3. Madras
 - ☒ 4. Calcutta

Question ID : **26433065536**
Status : **Marked For Review**
Chosen Option : **4**

Q.13 Which of the following is NOT a Fundamental Duty?

- Ans
- ☐ 1. Develop the scientific temper
 - ☒ 2. Pay tax on time
 - ☐ 3. Respect National Flag and the National Anthem
 - ☐ 4. To defend the country and render national service when called upon to do so

Question ID : **26433054078**
Status : **Answered**
Chosen Option : **1**

Q.14 Which of the following leaders is also known as 'Frontier Gandhi'?

- Ans
- ☐ 1. Abul Kalam Azad
 - ☐ 2. Jawaharlal Nehru
 - ☒ 3. Khan Abdul Ghaffar Khan
 - ☐ 4. Vallabhbhai Patel

Question ID : **26433054295**
Status : **Answered**
Chosen Option : **3**

Q.15 At the AIBA Youth World Boxing Championships – 2021, India ranked_____.

- Ans
- ☐ 1. third
 - ☐ 2. second
 - ☐ 3. fourth
 - ☒ 4. first

Question ID : **26433054648**
Status : **Not Attempted and Marked For Review**
Chosen Option : **--**

Q.16 Temperature, pressure and humidity are the main components of:

- Ans
- ☐ 1. desert
 - ☒ 2. climate
 - ☐ 3. eating habits
 - ☐ 4. rainy forest

Question ID : 26433054056
Status : Answered
Chosen Option : 2

Q.17 The western part of which river, along with its significant tributaries Sonanadi, Palain and Mandal, forms the prominent hydrological resource for the Corbett National Park?

- Ans
- ☐ 1. Gandaki
 - ☐ 2. Beas
 - ☐ 3. Sutlej
 - ☒ 4. Ramganga

Question ID : 26433076757
Status : Answered
Chosen Option : 4

Q.18 Whose birth anniversary is celebrated as Non-Violence Day?

- Ans
- ☒ 1. Mohandas Karamchand Gandhi
 - ☐ 2. Mother Teresa
 - ☐ 3. Nelson Mandela
 - ☐ 4. Sardar Vallabhbhai Patel

Question ID : 26433054261
Status : Answered
Chosen Option : 1

Q.19 What was the growth rate of India's population in the decade of 2001 - 2011?

- Ans
- ☐ 1. 12.22%
 - ☐ 2. 15.97%
 - ☒ 3. 17.64%
 - ☐ 4. 21.61%

Question ID : 26433065393
Status : Marked For Review
Chosen Option : 3

Q.20 Under which medieval dynasty was the Jamat Khana Masjid in Delhi constructed?

- Ans
- ☐ 1. Mughal Dynasty
 - ☒ 2. Khilji Dynasty
 - ☐ 3. Lodi Dynasty
 - ☐ 4. Tughlaq Dynasty

Question ID : 26433054358
Status : Not Answered
Chosen Option : --

Q.21 Who was the first Indian woman to write an autobiography?

- Ans
- ☐ 1. Lakshmibai Tilak
 - ☐ 2. Baby Halder
 - ☐ 3. Kamala Das
 - ☒ 4. Rassundari Devi

Question ID : 26433054271
Status : Not Answered
Chosen Option : --

Q.22 Which of the following states had a population density of 751 - 1000 persons per km² as per the 2011 census?

- Ans
- ☐ 1. Tamil Nadu
 - ☒ 2. Kerala
 - ☐ 3. Maharashtra
 - ☐ 4. Gujarat

Question ID : 26433065397
Status : Answered
Chosen Option : 3

Q.23 The Election Laws (Amendment) Bill, 2021 seeks to designate 1 April, 1 July and 1 October as qualifying dates in addition to _____ for the enrolment of 18-year-olds as voters.

- Ans
- ☒ 1. 1 January
 - ☐ 2. 1 March
 - ☐ 3. 1 May
 - ☐ 4. 1 September

Question ID : 26433054427
Status : Answered
Chosen Option : 1

Q.24 Thawarchand Gehlot was appointed as the Governor of _____ in July 2021.

- Ans
- ☐ 1. Punjab
 - ☐ 2. Gujarat
 - ☒ 3. Karnataka
 - ☐ 4. Goa

Question ID : 26433069832
Status : Answered
Chosen Option : 3

Q.25 In India, where was the first jute mill set up near Kolkata in 1855?

- Ans
- ☐ 1. Naihati
 - ☐ 2. Ichapur
 - ☐ 3. Hooghly
 - ☒ 4. Rishra

Question ID : 26433067145
Status : Not Attempted and Marked For Review
Chosen Option : --